

RICHTER PFA LINEDE KUGLEVENTILER

KUGDN25PFA

PTFE linet kuglehane DN25 Flow 60 m³/t 3-17 bar

- Materiale: Duktilt jern ASTM A395/ EN-JS1049; PFA linet
- Liner: PFA
- Temperatur: -60 °C to +200 °C (-75 °F to +400 °F)
- Flange: ASME B16.10, klasse 150 kolonne 19
- Norminel trykklasse 150



PRODUKTBESKRIVELSE

Richter PFA Linede Kugleventiler

BVA PFA

Richters kugleventiler er designet som shut-off ventiler og automatisteret ventiler til farlige og corrosive gasser

Fås i mange størrelser fra 1" helt op til 6" . Liner i PFA.

Membranventilen kan sidde i mange forskellige miljøer fra -60°C helt op til +200°C.

max tryk på ventilen er 16 bar.

Fås både med manuel aktuator og elektronisk styret aktuator.

Kan bestilles med Al₂O₃ ceramic ball.

Fuld borret i størrelserne 1" og 2" til ASME/ANSI.

Hvilket resulterer i et bedre flowrate, minimum tryktab og mere effektiv rensning med pegging system.

I størrelserne 3", 4" og 6" ASME/ANSI er ventilerne halv borret

Har et kompakt design, og bruger mindre torque for et en bedre økonomisk aktuation.

Kontakt vores produktspecialist, for den mest optimale løsning, til netop dit behov

;

Flow rates

| Series | N ₂ m³/h | C | Dry gas test | | | | Dry gas test | | | | | | | | |
|--------|------------------------|------|--------------|-------|-------|--------|--------------|------|------|-------|--------|-----------|-----|-------|-----|
| | | | 3145 | 6391 | 19173 | 172250 | max. adm. | 3145 | 6391 | 19173 | 172250 | max. adm. | | | |
| BVA | 100 | 100 | 100 | 100 | 100 | 100 | 100 | 100 | 100 | 100 | 100 | 100 | 100 | 100 | 100 |
| 1"1" | 60 | 70 | 8 | 7.1 | 8 | 7.1 | 8 | 7.1 | 10 | 8.9 | 10 | 8.9 | 12 | 10.6 | 12 |
| 1"1/2" | 190 | 221 | 26 | 17.7 | 20 | 17.7 | 20 | 17.7 | 25 | 22.1 | 25 | 22.1 | 30 | 26.1 | 30 |
| 2" | 320 | 320 | 35 | 23.1 | 25 | 23.1 | 25 | 23.1 | 30 | 26.6 | 30 | 26.6 | 35 | 30.6 | |
| 4" | 587 | 684 | 50 | 44.3 | 50 | 44.3 | 42 | 54.8 | 43 | 73.5 | 50.0 | 44.2 | 50 | 64.1 | |
| 6" | 1250 | 1455 | 80 | 70.8 | 80 | 70.8 | 82 | 114 | 120 | 152.0 | 100 | 84.2 | 100 | 126.0 | |
| 8" | 2000 | 2362 | 120 | 117.0 | 120 | 117.0 | 120 | 150 | 155 | 198.0 | 120 | 151.0 | 150 | 192.0 | |

Ball Valve see series KVNNA
Torques measured with water 20 °C (68 °F). Depending on the medium, a gaseous or viscous liquid crystallizing liquids.
The torques could increase.

Operating torques PFA-lined ball/stem unit

Operating torques ALD_ceramic ball

Dimensions and weights BVA (ASME/ANSI)

| Series | N ₂ m³/h | C | Dry gas test | | | | Dry gas test | | | | | | | | |
|--------|------------------------|------|--------------|-------|-------|--------|--------------|------|------|-------|--------|-----------|-----|-------|-----|
| | | | 3145 | 6391 | 19173 | 172250 | max. adm. | 3145 | 6391 | 19173 | 172250 | max. adm. | | | |
| BVA | 100 | 100 | 100 | 100 | 100 | 100 | 100 | 100 | 100 | 100 | 100 | 100 | 100 | 100 | 100 |
| 1"1" | 60 | 70 | 8 | 7.1 | 8 | 7.1 | 10 | 8.9 | 10 | 8.9 | 12 | 10.6 | 12 | 10.6 | 12 |
| 1"1/2" | 190 | 221 | 26 | 17.7 | 20 | 17.7 | 25 | 22.1 | 25 | 22.1 | 30 | 26.1 | 30 | 26.1 | 30 |
| 2" | 320 | 320 | 35 | 23.1 | 25 | 23.1 | 30 | 26.6 | 30 | 26.6 | 35 | 30.6 | 35 | 30.6 | |
| 4" | 587 | 684 | 50 | 44.3 | 50 | 44.3 | 42 | 54.8 | 43 | 73.5 | 50.0 | 44.2 | 50 | 64.1 | |
| 6" | 1250 | 1455 | 80 | 70.8 | 80 | 70.8 | 82 | 114 | 120 | 152.0 | 100 | 84.2 | 100 | 126.0 | |
| 8" | 2000 | 2362 | 120 | 117.0 | 120 | 117.0 | 120 | 150 | 155 | 198.0 | 120 | 151.0 | 150 | 192.0 | |

face to face ASME/ANSI B16.10 short, flanges ASME (ANSI) B16.5 Cl. 150 **
* normally supplied PFA-lined ball/stem unit ** see request directed to 01 904 500 706-2

Flow rates

| Series | N ₂ m³/h | C | Dry gas test | | | | Dry gas test | | | | | | | |
|--------|------------------------|------|--------------|-------|-------|--------|--------------|------|------|-------|--------|-----------|-----|-------|
| | | | 3145 | 6391 | 19173 | 172250 | max. adm. | 3145 | 6391 | 19173 | 172250 | max. adm. | | |
| BVA | 100 | 100 | 100 | 100 | 100 | 100 | 100 | 100 | 100 | 100 | 100 | 100 | 100 | 100 |
| 1"1" | 60 | 70 | 8 | 7.1 | 8 | 7.1 | 10 | 8.9 | 10 | 8.9 | 12 | 10.6 | 12 | 10.6 |
| 1"1/2" | 190 | 221 | 26 | 17.7 | 20 | 17.7 | 25 | 22.1 | 25 | 22.1 | 30 | 26.1 | 30 | 26.1 |
| 2" | 320 | 320 | 35 | 23.1 | 25 | 23.1 | 30 | 26.6 | 30 | 26.6 | 35 | 30.6 | 35 | 30.6 |
| 4" | 587 | 684 | 50 | 44.3 | 50 | 44.3 | 42 | 54.8 | 43 | 73.5 | 50.0 | 44.2 | 50 | 64.1 |
| 6" | 1250 | 1455 | 80 | 70.8 | 80 | 70.8 | 82 | 114 | 120 | 152.0 | 100 | 84.2 | 100 | 126.0 |
| 8" | 2000 | 2362 | 120 | 117.0 | 120 | 117.0 | 120 | 150 | 155 | 198.0 | 120 | 151.0 | 150 | 192.0 |

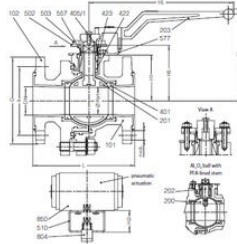
Ball Valve see series KVNNA
Torques measured with water 20 °C (68 °F). Depending on the medium, a gaseous or viscous liquid crystallizing liquids.
The torques could increase.

Operating torques PFA-lined ball/stem unit

Operating torques ALD_ceramic ball

Components and materials

| Item | Material |
|------|-------------------|
| 101 | Ball |
| 102 | Ball stem |
| 103 | Body end piece |
| 104 | Ball |
| 105 | Ball stem unit |
| 106 | Stem |
| 107 | Seat |
| 108 | Seat ring |
| 109 | Throat ring |
| 110 | Body |
| 111 | Flange |
| 112 | Flange gasket |
| 113 | Flange nut |
| 114 | Flange washer |
| 115 | Flange lockwasher |
| 116 | Flange locknut |
| 117 | Flange lockwasher |
| 118 | Flange locknut |
| 119 | Flange lockwasher |
| 120 | Flange locknut |
| 121 | Flange lockwasher |
| 122 | Flange locknut |
| 123 | Flange lockwasher |
| 124 | Flange locknut |
| 125 | Flange lockwasher |
| 126 | Flange locknut |
| 127 | Flange lockwasher |
| 128 | Flange locknut |
| 129 | Flange lockwasher |
| 130 | Flange locknut |
| 131 | Flange lockwasher |
| 132 | Flange locknut |
| 133 | Flange lockwasher |
| 134 | Flange locknut |
| 135 | Flange lockwasher |
| 136 | Flange locknut |
| 137 | Flange lockwasher |
| 138 | Flange locknut |
| 139 | Flange lockwasher |
| 140 | Flange locknut |
| 141 | Flange lockwasher |
| 142 | Flange locknut |
| 143 | Flange lockwasher |
| 144 | Flange locknut |
| 145 | Flange lockwasher |
| 146 | Flange locknut |
| 147 | Flange lockwasher |
| 148 | Flange locknut |
| 149 | Flange lockwasher |
| 150 | Flange locknut |



Dimensions and weights BVA (ASME/ANSI)

| Series | N ₂ m³/h | C | Dry gas test | | | | Dry gas test | | | | | | | |
|--------|------------------------|------|--------------|-------|-------|--------|--------------|------|------|-------|--------|-----------|-----|-------|
| | | | 3145 | 6391 | 19173 | 172250 | max. adm. | 3145 | 6391 | 19173 | 172250 | max. adm. | | |
| BVA | 100 | 100 | 100 | 100 | 100 | 100 | 100 | 100 | 100 | 100 | 100 | 100 | 100 | 100 |
| 1"1" | 60 | 70 | 8 | 7.1 | 8 | 7.1 | 10 | 8.9 | 10 | 8.9 | 12 | 10.6 | 12 | 10.6 |
| 1"1/2" | 190 | 221 | 26 | 17.7 | 20 | 17.7 | 25 | 22.1 | 25 | 22.1 | 30 | 26.1 | 30 | 26.1 |
| 2" | 320 | 320 | 35 | 23.1 | 25 | 23.1 | 30 | 26.6 | 30 | 26.6 | 35 | 30.6 | 35 | 30.6 |
| 4" | 587 | 684 | 50 | 44.3 | 50 | 44.3 | 42 | 54.8 | 43 | 73.5 | 50.0 | 44.2 | 50 | 64.1 |
| 6" | 1250 | 1455 | 80 | 70.8 | 80 | 70.8 | 82 | 114 | 120 | 152.0 | 100 | 84.2 | 100 | 126.0 |
| 8" | 2000 | 2362 | 120 | 117.0 | 120 | 117.0 | 120 | 150 | 155 | 198.0 | 120 | 151.0 | 150 | 192.0 |

face to face ASME/ANSI B16.10 short, flanges ASME (ANSI) B16.5 Cl. 150 **
* normally supplied PFA-lined ball/stem unit ** see request directed to 01 904 500 706-2

Components and materials

| Item | Material |
|------|-------------------|
| 101 | Ball |
| 102 | Ball stem |
| 103 | Body end piece |
| 104 | Ball |
| 105 | Ball stem unit |
| 106 | Stem |
| 107 | Seat |
| 108 | Seat ring |
| 109 | Throat ring |
| 110 | Body |
| 111 | Flange |
| 112 | Flange gasket |
| 113 | Flange nut |
| 114 | Flange washer |
| 115 | Flange lockwasher |
| 116 | Flange locknut |
| 117 | Flange lockwasher |
| 118 | Flange locknut |
| 119 | Flange lockwasher |
| 120 | Flange locknut |
| 121 | Flange lockwasher |
| 122 | Flange locknut |
| 123 | Flange lockwasher |
| 124 | Flange locknut |
| 125 | Flange lockwasher |
| 126 | Flange locknut |
| 127 | Flange lockwasher |
| 128 | Flange locknut |
| 129 | Flange lockwasher |
| 130 | Flange locknut |
| 131 | Flange lockwasher |
| 132 | Flange locknut |
| 133 | Flange lockwasher |
| 134 | Flange locknut |
| 135 | Flange lockwasher |
| 136 | Flange locknut |
| 137 | Flange lockwasher |
| 138 | Flange locknut |
| 139 | Flange lockwasher |
| 140 | Flange locknut |
| 141 | Flange lockwasher |
| 142 | Flange locknut |
| 143 | Flange lockwasher |
| 144 | Flange locknut |
| 145 | Flange lockwasher |
| 146 | Flange locknut |
| 147 | Flange lockwasher |
| 148 | Flange locknut |
| 149 | Flange lockwasher |
| 150 | Flange locknut |

