

INTERAPP ALUMINIUMS GEARBOX

Til butterflyventiler

GB232-05

Aluminium polyurethan coated gearbox Topflange: F05-F07 Firkant: 11/14 mm DN: 32-40-50-65-80



- Materiale: aluminium, polyurethan coated
- Kan også leveres i rustfrit stål 1.4301 med tætningsgrad IP 68 og i GG25 med tætningsgrad IP 65 eller IP 68
- Mulighed for montering af tilbage- melder

PRODUKTBESKRIVELSE

Håndbetjent gearkasse, med aluminiumshus og polyurethan belagt.

Til brug for f.eks. InterApp's Desponia, Bianca eller Aquaria butterflyventiler.

Kontakt vores produktspecialist, for den mest optimale løsning, til netop dit behov

;

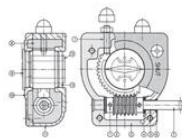
SPECIFIKATIONER

Montering	EN ISO5211
Temperaturområde	-20C +120C



Construction

1	Set screw	Steel 6.8
2	Worm	Steel C45
3	Gasket	NBR
4	Needle bearing	
5	Plain bearing	Pernaglide
6	Seal ring	Nitril
7	Shaft	Stainless steel
8	Grease	Multipurpose EP2
9	Friction indicator	Polypropylene
10	Coverplate	Aluminium AL201
11	Body	Aluminium AL201
12	Insert	Stainless steel
13	Quadrant	GGG40

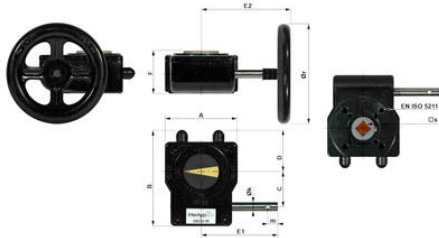


Type code

GB232-05 F05-F07 14 ... 100

Actuator size	GB232-05	125 Nm
	GB232-05	250 Nm
	GB232-08	500 Nm
	GB232-13	1000 Nm
	GB232-14	1500 Nm
Mounting face for valve	F05 - F14	according to EN ISO5211
Shaft connection	[mm]	Dimension of shaft connection
Handwheel diameter	[mm]	

Dimensions

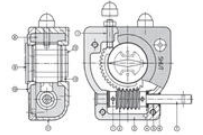


EN ISO 5211	~n	Dr	Md max	A	B	C	D	E1	E2	F	Lk	m	n"	Pqj	
GB232-06	F06-F07	11 / 14	100	125 Nm	80	114	42.5	48	105	121	53	12	14	10	0,8
		14 / 17	160	250 Nm	80	114	42.5	48	155	179	59	12	14	10	0,9
GB232-08	F07-F10	17 / 22	250	500 Nm	100	131	50	56	170	205	67	12	14	9,25	1,55
		22 / 27	300	720 Nm	100	131	50	56	170	205	67	12	14	9,25	1,55
GB232-13	F10-F12 / F14	22 / 27	400	950 Nm	175	209	80	83	280	378	84	20	24	10	5,4
		27 / 32	500	1000 Nm	175	209	80	83	280	378	84	20	24	10	5,4
GB232-14	F10-F12 / F14	22 / 27 / Ø45	500	1200 Nm	175	209	80	83	280	396	84	20	24	10	5,4
		27 / 32	600	1440 Nm	175	209	80	83	280	396	84	20	24	10	5,4

* n = Handwheel turns ON/OFF

Construction

1	Set screw	Steel 8.8
2	Worm	Steel C45
3	Gasket	NBR
4	Needle bearing	
5	Plain bearing	Pernmagide
6	Seal ring	Nitril
7	Shaft	Stainless steel
8	Grease	Multipurpose EP2
9	Position indicator	Polycarbonate
10	Coverplate	Aluminium AL201
11	Body	Aluminium AL201
12	Insert	Stainless steel
13	Quadrant	GOG40



Type code

GB232-05 ... F06-F07 14 ... 100

Actuator size	GB232-05	120 Nm
	GB232-06	250 Nm
	GB232-08	500 Nm
	GB232-13	1000 Nm
	GB232-14	1500 Nm
Mounting face for valve	F06 - F14	according to EN ISO 5211
Shaft connection	[mm]	Dimension of shaft connection
Handwheel diameter	[mm]	

Dimensions



EN ISO 5211	~n	Dr	Md max	A	B	C	D	E1	E2	F	Lk	m	n"	Pqj	
GB232-05	F06-F07	11 / 14	100	125 Nm	80	114	42.5	48	105	121	53	12	14	10	0,8
		14 / 17	160	250 Nm	80	114	42.5	48	155	179	59	12	14	10	0,9
GB232-08	F07-F10	17 / 22	250	500 Nm	100	131	50	56	170	205	67	12	14	9,25	1,55
		22 / 27	300	720 Nm	100	131	50	56	170	205	67	12	14	9,25	1,55
GB232-13	F10-F12 / F14	22 / 27	400	950 Nm	175	209	80	83	280	378	84	20	24	10	5,4
		27 / 32	500	1000 Nm	175	209	80	83	280	378	84	20	24	10	5,4
GB232-14	F10-F12 / F14	22 / 27 / Ø45	500	1200 Nm	175	209	80	83	280	396	84	20	24	10	5,4
		27 / 32	600	1440 Nm	175	209	80	83	280	396	84	20	24	10	5,4

* n = Handwheel turns ON/OFF