

DIN UNION FOR TOMME RØR

C113011003

DIN/TOMME svejsenippel DN 25/1"



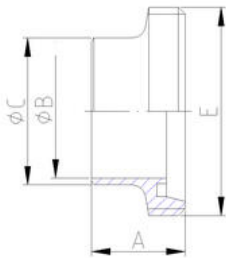
- DIN 11851
- Finish: Poleret
- 3.1 Certifikat kan leveres
- Kan leveres i forskellige overflade ruheder

**PRODUKTBESKRIVELSE**

Kan anvendes i levnedsmiddels- og pharmaceutisk industri.

Svejsenippel

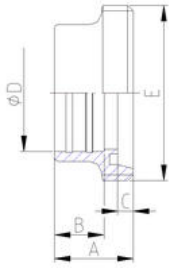
- DIN 11851
- Finish: Poleret
- 3.1 Certifikat kan leveres



DIM.	A	B	C	E	Vægt	AISI 316L
mm	mm	mm	mm	mm	Kg.	Vare nr.
25 / 1"	29	22,9	25,4	52x1/6"	0,100	C113011003
32 / 1 1/4"	32	29,3	31,8	58x1/6"	0,110	C113011143
40 / 1 1/2"	33	35,1	38,1	65x1/6"	0,160	C113011123
50 / 2"	35	47,8	50,8	78x1/6"	0,220	C113012003
65 / 2 1/2"	40	60,5	63,5	95x1/6"	0,360	C113012123
75 / 3"	40	72,1	76,1	104x1/6"	0,420	M113013003
80 / 3"	45	73,0	76,1	110x1/4"	0,560	C113013003
100 / 4"	54	97,6	101,6	130x1/4"	0,640	C113014003

Valse nippel

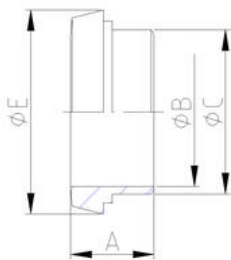
- DIN 11851
- Finish: Poleret
- 3.1 Certifikat kan leveres



DIM.			A	B	C	D	E	Vægt	AISI 304	AISI 316L
mm			mm	mm	mm	mm	mm	Kg.	Vare nr.	Vare nr.
25	/	1"	29	15	7	25,6	52x1/6"	0,150	M105011001	M105011003
32	/	1 1/4"	32	18	7	32,0	58x1/6"	0,170	M105011141	M105011143
40	/	1 1/2"	33	20	7	38,3	65x1/6"	0,220	M105011121	M105011123
50	/	2"	35	22	7	51,0	78x1/6"	0,310	M105012001	M105012003
65	/	2 1/2"	40	25	8	63,8	95x1/6"	0,470	M105012121	M105012123
75	/	3"	40	25	8	76,4	104x1/4"	0,540	M105013001	M105013003
100	/	4"	54	35	10	101,9	130x1/4"	1,000	M105014001	M105014003

Svejskrave

- DIN 11851
- Finish: Poleret
- 3.1 Certifikat kan leveres

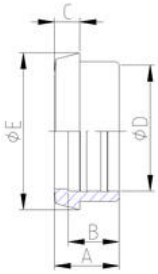


DIM.			A	B	C	E	Vægt	AISI 316L
mm			mm	mm	mm	mm	Kg.	Vare nr.
25	/	1"	22	22,9	25,4	44	0,080	C114011003
32	/	1 1/4"	25	29,3	31,8	50	0,110	C114011143
40	/	1 1/2"	26	35,1	38,1	56	0,130	C114011123
50	/	2"	28	47,8	50,8	68,5	0,180	C114012003
65	/	2 1/2"	32	60,5	63,5	86	0,330	C114012123
75	/	3"	32	72,1	76,1	93	0,310	M114013003

80	/	3"	37	73	76,1	100	0,500	C114013003
100	/	4"	44	97,6	101,6	121	0,670	C114014003

Valse krave

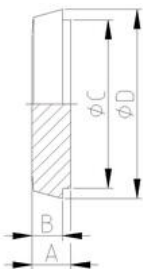
<ul style="list-style-type: none"> • DIN 11851 • Finish: Poleret • 3.1 Certifikat kan leveres 	
--	--



DIM.	A	B	C	D	E	Vægt	AISI 304	AISI 316L
mm	mm	mm	mm	mm	mm	Kg.	Vare nr.	Vare nr.
25 / 1"	22	15	10	25,6	44	0,100	M106011001	M106011003
32 / 1 1/4"	25	18	10	32,0	50	0,130	M106011141	M106011143
40 / 1 1/2"	26	20	10	38,3	56	0,160	M106011121	M106011123
50 / 2"	28	22	11	51,0	68,5	0,220	M106012001	M106012003
65 / 2 1/2"	32	25	12	63,8	86	0,430	M106012121	M106012123
75 / 3"	32	25	12	76,4	93	0,350	M106013001	M106013003
100 / 4"	44	35	15	101,9	121	0,800	M106014001	M106014003

Blind krave

<ul style="list-style-type: none"> • DIN 11851 • Finish: Poleret 	
--	--

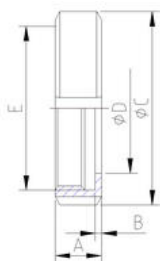


DIM.	A	B	C	D	Vægt	AISI 304	AISI 316L
mm	mm	mm	mm	mm	Kg.	Vare nr.	Vare nr.
25 / 1"	13	10	35	44	1,120	M118000251	M118000253

32	/	1 1/4"	13	10	41	50	0,160	M118000321	M118000323
40	/	1 1/2"	13	10	48	56	0,220	M118000401	M118000403
50	/	2"	14	11	61	68,5	0,360	M118000501	M118000503
65	/	2 1/2"	16	12	79	86	0,660	M118000651	M118000653
80	/	3"	16	12	93	100	0,910	M118000801	M118000803
100	/	4"	20	15	114	121	1,660	M118001001	M118001003

Omløber

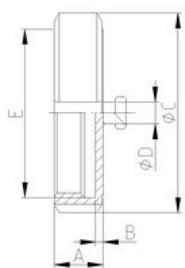
<ul style="list-style-type: none"> • DIN 11851 • Finish: Poleret • 3.1 Certifikat kan leveres 	
--	--



DIM.			A	B	C	D	E	Vægt	AISI 304
mm			mm	mm	mm	mm	mm	Kg.	Vare nr.
25	/	1"	21	3	63	36	52x1/6"	0,160	C110000251
32	/	1 1/4"	21	3	70	42	58x1/6"	0,190	C110000321
40	/	1 1/2"	21	3	78	49	65x1/6"	0,240	C110000401
50	/	2"	22	3	92	62	78x1/6"	0,320	C110000501
65	/	2 1/2"	25	4	112	80	95x1/6"	0,530	C110000651
75	/	3"	25	4	119	88	104x1/6"	0,500	M110000751
80	/	3"	29	4	127	94	110x1/4"	0,720	C110000801
100	/	4"	31	5	148	115	130x1/4"	0,970	C110001001

Blindomløber med knop samt kæde med krog og øje

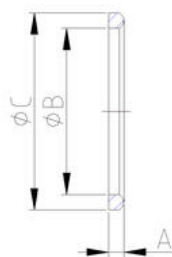
<ul style="list-style-type: none"> • DIN 11851 • Finish: Poleret • 3.1 Certifikat kan leveres 	
--	--



Blind omløber med knop									Kæde med krog og øje			
DIM.	A	B	C	D	E	Vægt	AISI 304	AISI 316L	DIM.	B	Vægt	AISI 304
mm	mm	mm	mm	mm	mm	Kg.	Vare nr.	Vare nr.	mm	mm	Kg.	Vare nr.
25 / 1"	21,5	3,5	63	10	52x1/6"	0,19	M121000251	M121000253	25 / 1"	90	0,03	M123020250
32 / 1 1/4"	21,5	3,5	70	10	58x1/6"	0,25	M121000321	M121000323	32 / 1 1/4"	100	0,03	M123020320
40 / 1 1/2"	21,5	3,5	78	10	65x1/6"	0,32	M121000401	M121000403	40 / 1 1/2"	110	0,03	M123020400
50 / 2"	22,5	3,5	92	10	78x1/6"	0,49	M121000501	M121000503	50 / 2"	130	0,035	M123020500
65 / 2 1/2"	25,5	4,5	112	10	95x1/6"	0,75	M121000651	M121000653	65 / 2 1/2"	140	0,035	M123020650
75 / 3"	25,5	4,5	119	10	104x1/6"	0,85	M121000751	M121000753				
80 / 3"	29,5	4,5	127	10	110x1/4"	1,07	M121000801	M121000803	80 / 3"	140	0,05	M123020800
100 / 4"	31,5	5,5	148	10	130x1/4"	1,52	M121001001	M121001003	100 / 4"	170	0,05	M123021000

Pakninger (standard) og ekstra høj

- DIN 11851
- FDA erklæring kan leveres

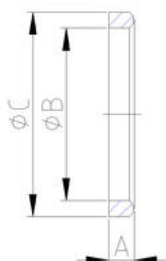


Standard

DIM.	A	B	C	Vægt	Silikone	NBR	EPDM	Viton	PTFE
mm	mm	mm	mm	Kg.	Vare nr.	Vare nr.	Vare nr.	Vare nr.	Vare nr.
25 / 1"	5	30	40	0,003	M111000250100	M111000250200	M111000250300	M111000250400	M111000250500
32/1 1/4"	5	36	46	0,004	M111000320100	M111000320200	M111000320300	M111000320400	M111000320500
40/1 1/2"	5	42	52	0,004	M111000400100	M111000400200	M111000400300	M111000400400	M111000400500
50 / 2"	5	54	64	0,005	M111000500100	M111000500200	M111000500300	M111000500400	M111000500500
65/2 1/2"	5	71	81	0,006	M111000650100	M111000650200	M111000650300	M111000650400	M111000650500

75 / 3"	5	78	88	0,008	M111000750100	M111000750200	M111000750300	M111000750400	M111000750500
80 / 3"	5	85	95	0,008	M111000800100	M111000800200	M111000800300	M111000800400	M111000800500
100 / 4"	6	104	114	0,012	M111001000100	M111001000200	M111001000300	M111001000400	M111001000500

- DIN 11851
- FDA erklæring kan leveres

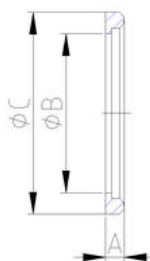


Ekstra høj

DIM.	A	B	C	Vægt	Silikone	NBR	EPDM	Viton
mm	mm	mm	mm	Kg.	Vare nr.	Vare nr.	Vare nr.	Vare nr.
25 / 1"	8	30	40	0,003	M111100250100	M111100250200	M111100250300	M111100250400
32 / 1 1/4"	8	36	46	0,004	M111100320100	M111100320200	M111100320300	M111100320400
40 / 1 1/2"	8	42	52	0,004	M111100400100	M111100400200	M111100400300	M111100400400
50 / 2"	8	54	64	0,005	M111100500100	M111100500200	M111100500300	M111100500400
65 / 2 1/2"	8	71	81	0,006	M111100650100	M111100650200	M111100650300	M111100650400
80 / 3"	8	85	95	0,008	M111100800100	M111100800200	M111100800300	M111100800400
100 / 4"	8	104	114	0,012	M111101000100	M111101000200	M111101000300	M111101000400

Pakninger (L-form)

- DIN 11851
- FDA erklæring kan leveres

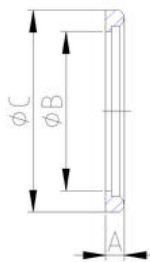


DIM.	A	B	C	Vægt	Silikone	NBR	EPDM	Viton
------	---	---	---	------	----------	-----	------	-------

mm	mm	mm	mm	Kg.	Vare nr.	Vare nr.	Vare nr.	Vare nr.
25 / 1"	6	26,5	40	0,003	M111200250100	M111200250200	M111200250300	M111200250400
32 / 1 1/4"	6	32,5	46	0,004	M111200320100	M111200320200	M111200320300	M111200320400
40 / 1 1/2"	6	38,5	52	0,004	M111200400100	M111200400200	M111200400300	M111200400400
50 / 2"	6	50,5	64	0,005	M111200500100	M111200500200	M111200500300	M111200500400
65 / 2 1/2"	6	66,5	81	0,006	M111200650100	M111200650200	M111200650300	M111200650400
80 / 3"	6	81,5	95	0,008	M111200800100	M111200800200	M111200800300	M111200800400
100 / 4"	6	100,5	114	0,012	M111201000100	M111201000200	M111201000300	M111201000400

Pakning til blind omløber

- DIN 11851
- FDA erklæring kan leveres



DIM.	A	B	C	Vægt	Silikone	NBR	EPDM	Viton
mm	mm	mm	mm	Kg.	Vare nr.	Vare nr.	Vare nr.	Vare nr.
25 / 1"	6	26,5	40	0,003	M111200250100	M111200250200	M111200250300	M111200250400
32 / 1 1/4"	6	32,5	46	0,004	M111200320100	M111200320200	M111200320300	M111200320400
40 / 1 1/2"	6	38,5	52	0,004	M111200400100	M111200400200	M111200400300	M111200400400
50 / 2"	6	50,5	64	0,005	M111200500100	M111200500200	M111200500300	M111200500400
65 / 2 1/2"	6	66,5	81	0,006	M111200650100	M111200650200	M111200650300	M111200650400
80 / 3"	6	81,5	95	0,008	M111200800100	M111200800200	M111200800300	M111200800400
100 / 4"	6	100,5	114	0,012	M111201000100	M111201000200	M111201000300	M111201000400