

VT SERIEN

VT-SERIEN
VT-Serien

- Tryk: 241, 414, 690 bar
- Leak: Bubble tight
- CV: 0.75
- Aktuator trykområde: 5.5 - 7.6 bar
- Vægt: 2.3 kg



PRODUKTBESKRIVELSE

Tescom VT Serien

3-vejs luftbetjent ventil med lang levetid i kompakt design.

Applikationer

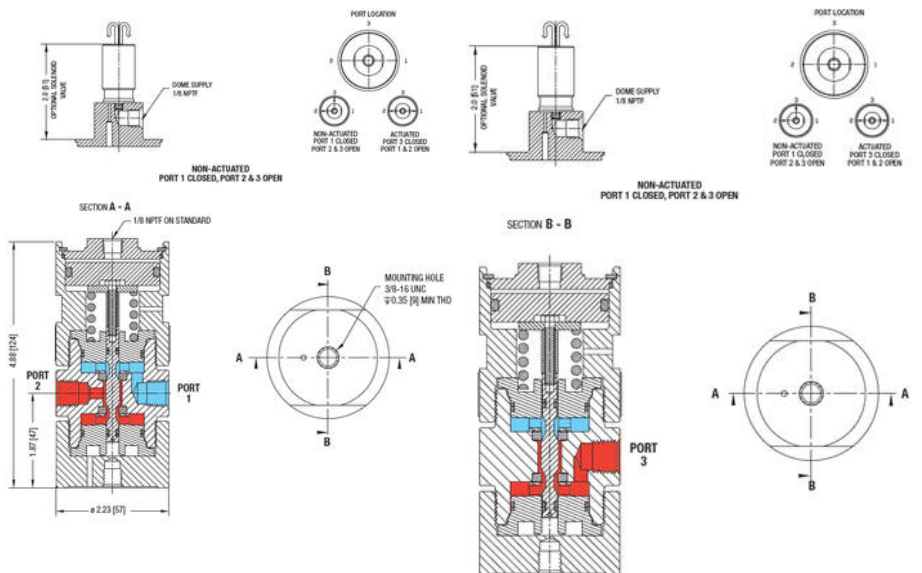
- Test af trykcyklus på komponenter
- To-kilde-vælgerventil
- Fyldnings- og tømningsapplikationer (f.eks. fyldning af airbag-beholder, fyldning af gasfjedre)
- Nødstop
- Pneumatiske og hydrauliske applikationer

Fordele

- 1/4" og 3/8" porte
- Cv = 0.75
- Balanceret hoved ventil
- Magnetventilen er valgfri
- 2 positioner, 3-vejs
- Tæthed mod lækage - Klasse VI lukning (bobletæt)

VT	6	AB			9	A	A	A	
BASIC SERIES	BODY MATERIAL	SEAL MATERIAL	O-RING MATERIAL	MAXIMUM OPERATING PRESSURE	OPERATING TEMPERATURE*	OPTIONS	1. PORT LOCATION SIZE AND TYPE	2. PORT LOCATION SIZE AND TYPE	3. PORT LOCATION SIZE AND TYPE
VT	S-316 Stainless Steel	AB-1375 (Std)pt	NBR	Brass body 2500 psig 241 bar	-80°F to 181°F -40°C to 74°C	B - Inlet	A - 1/8" NPTF	A - 1/8" NPTF	A - 1/8" NPTF
		AK-1375 (Std)pt	Kalrez®	2500 psig 241 bar	-20°F to 280°F -7°C to 137°C	C - CCS	C - 3/8" NPTF	C - 3/8" NPTF	C - 3/8" NPTF
		AL-1375 (Std)pt	FKM	2500 psig 241 bar	-133°F to 230°F -85°C to 121°C	V - Solenoid valve 24 volt DC	E - 1/8" SAE	E - 1/8" SAE	E - 1/8" SAE
		AM-1375 (Std)pt	Ethylene Propylene	2500 psig 241 bar	-80°F to 181°F -40°C to 74°C	W - Solenoid valve 12 volt DC	F - 3/8" SAE	F - 3/8" SAE	F - 3/8" SAE
		AO-1375 (Std)pt	Urethane	2500 psig 241 bar	-80°F to 181°F -40°C to 74°C				
		CB-PC70	NBR	Brass body 4000 psig 412 bar	-80°F to 181°F -40°C to 74°C				
		CK-PC70	Kalrez®	2500 psig 241 bar	-20°F to 280°F -7°C to 137°C				
		CL-PC70	FKM	2500 psig 241 bar	-133°F to 230°F -85°C to 121°C				
		CO-PC70	Ethylene Propylene	2500 psig 241 bar	-80°F to 181°F -40°C to 74°C				
		CP-PC70	Urethane	2500 psig 241 bar	-80°F to 181°F -40°C to 74°C				
		PF-100K	NBR	Brass body 4000 psig 412 bar	-80°F to 181°F -40°C to 74°C				
		PK-100K	Kalrez®	2500 psig 241 bar	-20°F to 280°F -7°C to 137°C				
PL-100K	FKM	2500 psig 241 bar	-133°F to 230°F -85°C to 121°C						
PO-100K	Ethylene Propylene	2500 psig 241 bar	-80°F to 181°F -40°C to 74°C						
PP-100K	Urethane	2500 psig 241 bar	-80°F to 181°F -40°C to 74°C						
WP - Polyamide (Std)pt	NBR	Brass body 4000 psig 412 bar	-80°F to 181°F -40°C to 74°C						
WK - Polyamide (Std)pt	Kalrez®	2500 psig 241 bar	-20°F to 280°F -7°C to 137°C						
WL - Polyamide (Std)pt	FKM	2500 psig 241 bar	-133°F to 230°F -85°C to 121°C						
WO - Polyamide (Std)pt	Ethylene Propylene	2500 psig 241 bar	-80°F to 181°F -40°C to 74°C						
WU - Polyamide (Std)pt	Urethane	2500 psig 241 bar	-80°F to 181°F -40°C to 74°C						

* Brass body is limited to -200°F (-133°C) maximum.
 **FKM, Perfluoroelastomer (Kalrez®)



VT	6	AB			9	A	A	A	
BASIC SERIES	BODY MATERIAL	SEAL MATERIAL	O-RING MATERIAL	MAXIMUM OPERATING PRESSURE	OPERATING TEMPERATURE*	OPTIONS	1. PORT LOCATION SIZE AND TYPE	2. PORT LOCATION SIZE AND TYPE	3. PORT LOCATION SIZE AND TYPE
VT	S-316 Stainless Steel	AB-1375 (Std)pt	NBR	Brass body 2500 psig 241 bar	-80°F to 181°F -40°C to 74°C	B - Inlet	A - 1/8" NPTF	A - 1/8" NPTF	A - 1/8" NPTF
		AK-1375 (Std)pt	Kalrez®	2500 psig 241 bar	-20°F to 280°F -7°C to 137°C	C - CCS	C - 3/8" NPTF	C - 3/8" NPTF	C - 3/8" NPTF
		AL-1375 (Std)pt	FKM	2500 psig 241 bar	-133°F to 230°F -85°C to 121°C	V - Solenoid valve 24 volt DC	E - 1/8" SAE	E - 1/8" SAE	E - 1/8" SAE
		AM-1375 (Std)pt	Ethylene Propylene	2500 psig 241 bar	-80°F to 181°F -40°C to 74°C	W - Solenoid valve 12 volt DC	F - 3/8" SAE	F - 3/8" SAE	F - 3/8" SAE
		AO-1375 (Std)pt	Urethane	2500 psig 241 bar	-80°F to 181°F -40°C to 74°C				
		CB-PC70	NBR	Brass body 4000 psig 412 bar	-80°F to 181°F -40°C to 74°C				
		CK-PC70	Kalrez®	2500 psig 241 bar	-20°F to 280°F -7°C to 137°C				
		CL-PC70	FKM	2500 psig 241 bar	-133°F to 230°F -85°C to 121°C				
		CO-PC70	Ethylene Propylene	2500 psig 241 bar	-80°F to 181°F -40°C to 74°C				
		CP-PC70	Urethane	2500 psig 241 bar	-80°F to 181°F -40°C to 74°C				
		PF-100K	NBR	Brass body 4000 psig 412 bar	-80°F to 181°F -40°C to 74°C				
		PK-100K	Kalrez®	2500 psig 241 bar	-20°F to 280°F -7°C to 137°C				
PL-100K	FKM	2500 psig 241 bar	-133°F to 230°F -85°C to 121°C						
PO-100K	Ethylene Propylene	2500 psig 241 bar	-80°F to 181°F -40°C to 74°C						
PP-100K	Urethane	2500 psig 241 bar	-80°F to 181°F -40°C to 74°C						
WP - Polyamide (Std)pt	NBR	Brass body 4000 psig 412 bar	-80°F to 181°F -40°C to 74°C						
WK - Polyamide (Std)pt	Kalrez®	2500 psig 241 bar	-20°F to 280°F -7°C to 137°C						
WL - Polyamide (Std)pt	FKM	2500 psig 241 bar	-133°F to 230°F -85°C to 121°C						
WO - Polyamide (Std)pt	Ethylene Propylene	2500 psig 241 bar	-80°F to 181°F -40°C to 74°C						
WU - Polyamide (Std)pt	Urethane	2500 psig 241 bar	-80°F to 181°F -40°C to 74°C						

* Brass body is limited to -200°F (-133°C) maximum.
 **FKM, Perfluoroelastomer (Kalrez®)

