

## BUBBLE-TIGHT, KOMPLET SYSTEM, PETROKEMI, LABORATORIE, HØJT TRYK

### NA4 Changeover System

#### NA4

- Komplet System
- Gas delivery systems
- Petrochemical analyzer sampling systems
- Temperatur: -40°C til 74°C
- CV: 0.06



### PRODUKTBESKRIVELSE

#### Tescom NA4 Changeover System:

NA4 Changeover panelerne er et komplet system som er designet til at sikre et vedvarende flow af gasser uden afbrydelser på linjen. De har et design burst tryk 150% af max trykket.

#### Features:

Max inlet tryk: 207 barg  
 Max Outlet tryk: 103 barg  
 Temperaturområde: -40°C op til 74°C  
 CV Værdi: 0.06  
 Op til 8 cylinder pr side (16 total)  
 Messing eller Rustfri stål regulatorer  
 Flexibel Shut-off ventil  
 Mulighed for at skræderbygge  
 Kan bruges både ved lavt og højt tryk  
 Bubble-tight  
 Messing eller 316 Rustfri stål cabinet

#### Komplet system:

kan blandt andet bestilles med:  
 CGA tilslutninger  
 Slinger  
 Check Valve  
 Purge Valve  
 Pressure Switches  
 Alarmer

#### Ideel til brug i:

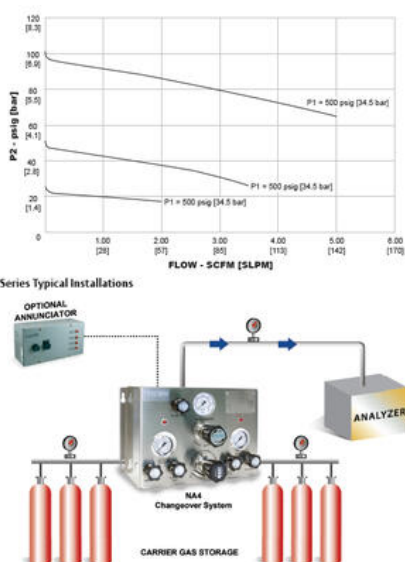
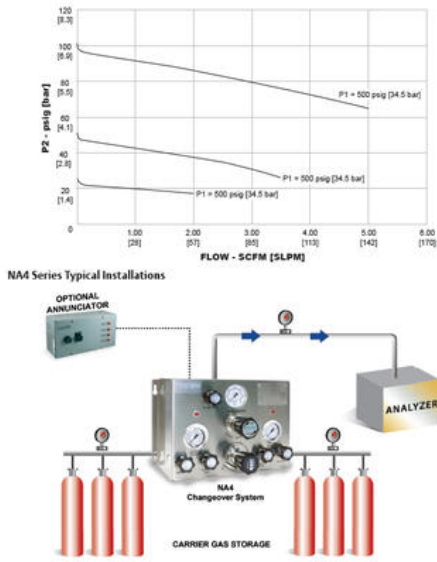
Petrokemisk analyserings sampling system  
 Gas leverings systemer  
 Laboratorier  
 Welding gases

OBS ! Den viste pris er kun for "basic" enheden  
 Kontakt vores produktspecialist for at finde den mest optimale løsning til dit behov.

;

## SPECIFIKATIONER

Flow kapacitet	0,06 Cv
Lækrate	Bubble-tight
Materiale	Rustfri stål eller Messing
Max Inlet Pressure	207 bar
Max Outlet Pressure	103 bar
Serie	NA4
Temperaturområde fra	-40 °C
Temperaturområde til	74 °C
Tilslutning	1/4" NPTF
Type	Changeover System
Vægt	4,5 kg

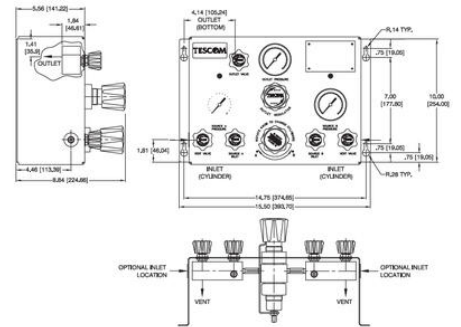


Example for selecting a part number:

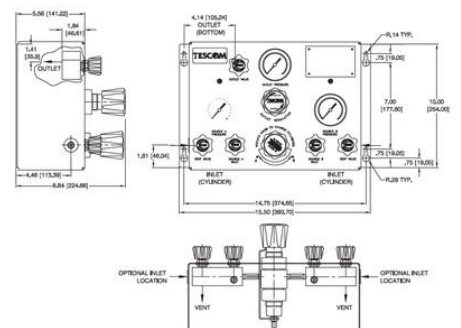
BASIC SERIAL	INLET & OUTLET PORT SIZE & TYPE	BODY MATERIAL	OUTLET PRESSURE RANGE	MAXIMUM INLET PRESSURE	OUTLET RELIEF VALVE	REGULATOR TYPE	PRESSURE SWITCH OPTIONS	ANNUNCIATOR OPTIONS	CHECK/SHUT-OFF VALVE OPTIONS	CONNECTION TYPE	NUMBER OF BOTTLES
NA4	1, 1/4" NPTF	1, 316 Stainless Steel	1, 2000 psig [13.8 bar]	0 - No 1, 2000 psig [13.8 bar]	0 - No 1, Yes	0 - None 1, Venting	0 - Gauge with integral switch and safety lights on panel 1 - Gauge with integral switch and safety lights on panel 2 - NO lights or light bulb on panel	0 - None 5 - Four channel remote-control annunciator with enclosure	0 - None 1 - Standard check valve (at inlet of panel) 2 - Check valve integrated with CGA or FC sample on each line 3 - Shut-off valve on each line 4 - Shut-off valve and integrated check valve 5 - Standard check valve (at inlet of panel) and shut-off valve on each line	0 - None 1 - 1/4" NPTF 2 - 1/2" NPTF 3 - 3/4" NPTF 4 - 1" NPTF 5 - 1 1/2" NPTF 6 - 2" NPTF	0 2 4 6 8 10 12 14 16

NO.	OUTLET PRESSURE	CHANGEOVER DELIVERY	PRESSURE SWITCH SETTING	OUTLET RANGE	RELIEF VALVE CRACK PRESSURE
C	0-20	150	200	60	45
H	0-20	270	200	60	45
J	0-50	270	200	160	90
K	0-100	270	200	200	110
L	0-150	270	200	200	225
M	0-200	270	200	200	225
N	0-200	450	500	600	300
O	0-200	450	500	600	450
P	0-500	700	770	1000	750
Q	0-750	900	900	1100	1125
R	0-1000	1200	1220	2000	1500
S	0-1500	2000	2200	2000	2000

NO.	CONNECTION TYPE	PRESSURE SWITCH AND RELIEF VALVE O-RING	HOSE CORE MATERIAL	HOSE SACKET MATERIAL
0	No CGA fitting, No Hoses	N/A	N/A	N/A
1	1/4" Female Lqd	Buna	Talpac®	Stainless Steel Shell
2	1/4" Female Lqd	Buna	Nylon	Polyethylene
3	CGA 580 (Helium)	Buna	Nylon	Polyethylene
4	CGA 580 (Hydrogen)	Buna	Nylon	Stainless Steel Shell
5	CGA 580 (Carbon Dioxide)	Buna	Nylon	Polyethylene
6	CGA 580 (Nitrogen)	Buna	Nylon	Polyethylene
7	CGA 580 (Oxygen)	Buna	Nylon	Stainless Steel Shell
8	CGA 580 (Acetylene)	Buna	Nylon	Polyethylene
9	CGA 580 (Argon)	Buna	Nylon	Polyethylene
10	CGA 580 (Chlorine)	Buna	Nylon	Stainless Steel Shell
11	1/4" Female Lqd	Buna	Stainless Steel	Stainless Steel Shell



All dimensions are reference & nominal  
Metric (millimeter) equivalents are in brackets



All dimensions are reference & nominal  
Metric (millimeter) equivalents are in brackets

