

## HIGH PRESSURE, MANUAL OG AUTOMATISERET, GAS PANEL, CHANGEOVER PANEL, 1 OG 2 CYLINDRE

KP Serien High Pressure

KP1HP

- Indgangstryk op til 150 Barg
- Temperatur: -20°C til 70°C
- CV 0.06
- Fås i AISI 316 SST eller Messing
- Kan fås med Explosion proof ventiler



### PRODUKTBESKRIVELSE

#### High Pressure Panel

Er en central gasforsyningsenhed til trykstyring af analytiske gasser i laboratoriefaciliteter.

Ved hjælp af trykmålere kan man overvåge påfyldningstrykket i gasflaskerne.

Dette produkt er ideelt til højtrykscentraler med gasforsyning til distribution af gasser i laboratorieapplikationer og velegnet til ECD (Electronic Capture Detector) applikationer.

#### Applikationer

- Højtryks central gasforsyningsenhed til distribution af gasser i laboratorie applikationer
- Egnet til ECD (Electronic Capture Detector) applikationer

#### Features and Benefits

- Til meget højt arbejdstryk op til 150 barg
- Valgfri Indgangsside med purge ventil, som renser med proces eller inert gas
- Nem at betjene (udluftningsventil inkluderet)
- Få tilslutninger, kompakt intern volume grundet det integreret design af ventiler og trykregulator i en bodyen
- Hurtig og nem installation
- Små dimensioner
- Rustfri stål montageplade til korrosive områder medfølger
- Højt tryk, "explosion proof contact gauge" fås som tilkøb

OBS ! Den viste pris er kun for "basic" enheden

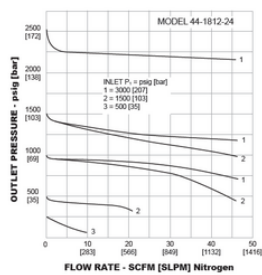
Kontakt vores produktspecialist for at finde den mest optimale løsning til dit behov.

;

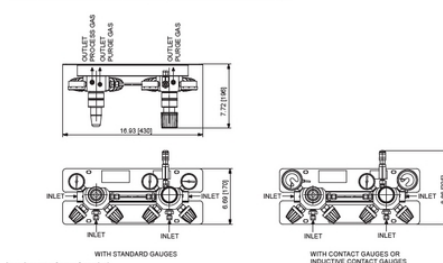
## SPECIFIKATIONER

<b>Accessories</b>	Cylinder rack, Collector pipe/extension
<b>Changeover</b>	Manual
<b>Cylindre</b>	1

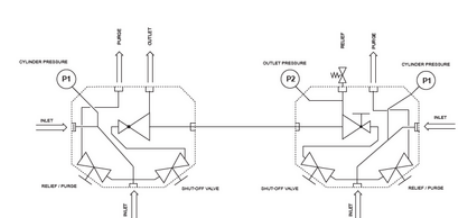
<b>Flow kapacitet</b>	0,06 Cv
<b>Gas Connection PN200</b>	None, Oxygen, Compressed Air, Non flammable gases, Flammable gases, Nitrogen, Test gas, Nitrous Oxide, Toxic Flammable gasses (only SST)
<b>Gas Connection PN200 CGA</b>	Hydrogen, Nitrogen, Nitrous Oxide, Compressed Air, Non flameable gases, Oxygen
<b>Gas Connection PN300</b>	Compressed Air, Oxygen, Non flameable gases, Flameable gases
<b>Gauge</b>	Standard, Contact, Inductive contact
<b>Materiale</b>	Rustfri stål eller Messing
<b>Max Inlet Pressure</b>	300 bar
<b>Max Outlet Pressure</b>	150 bar
<b>Serie</b>	KP1 High Pressure
<b>Stage</b>	Single stage
<b>Temperaturområde fra</b>	-20 °C
<b>Temperaturområde til</b>	70 °C
<b>Tilslutning</b>	1/4" Female, Ø6mm SST, Ø8mm SST, Ø10mm SST, Ø12mm SST, Ø8mm Messing, Ø10mm Messing, Ø12mm Messing, 1/4" SST, 1/2" SST
<b>Type</b>	Panel
<b>Vægt</b>	4,2 kg



HIGH PRESSURE PANEL FOR 2 CYLINDERS WITH AUTOMATIC CHANGEOVER



HIGH PRESSURE PANEL FOR 2 CYLINDERS WITH AUTOMATIC CHANGEOVER



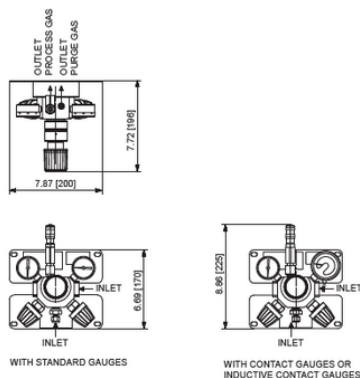
**High Pressure Panel Part Number Selector**

Repair Kits, Accessories & Modifications may be available for this product. Please contact TESCOM for more information.

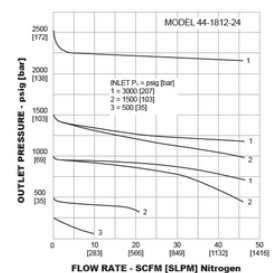
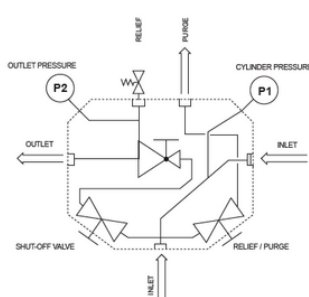
Example for selecting a part number:

KP1	6	SM	3
BASIC SERIES	MATERIAL	GAUGES	OUTLET PRESSURE RANGE
KP1	1 - Brass	SM - Standard gauge	3 - 2175 psig / 150 bar
KPA	6 - Stainless Steel	EM - Contact gauge EX - Inductive contact gauge	

HIGH PRESSURE PANEL FOR 1 CYLINDER



HIGH PRESSURE PANEL FOR 1 CYLINDER



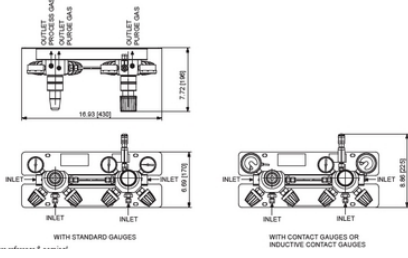
**High Pressure Panel Part Number Selector**

Repair Kits, Accessories & Modifications may be available for this product. Please contact TESCOM for more information.

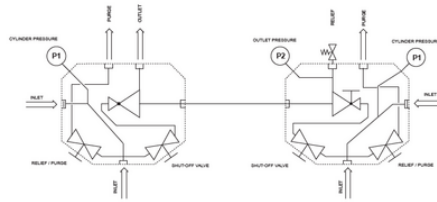
Example for selecting a part number:

KP1	6	SM	3
BASIC SERIES	MATERIAL	GAUGES	OUTLET PRESSURE RANGE
KP1	1 - Brass	SM - Standard gauge	3 - 2175 psig / 150 bar
KPA	6 - Stainless Steel	EM - Contact gauge EX - Inductive contact gauge	

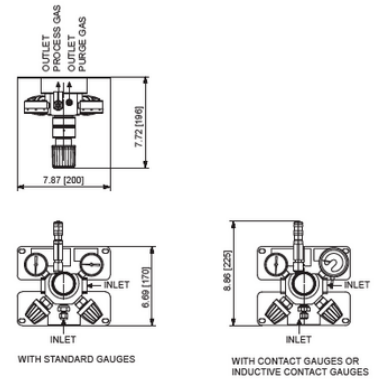
HIGH PRESSURE PANEL FOR 2 CYLINDERS WITH AUTOMATIC CHANGEOVER



HIGH PRESSURE PANEL FOR 2 CYLINDERS WITH AUTOMATIC CHANGEOVER



HIGH PRESSURE PANEL FOR 1 CYLINDER



HIGH PRESSURE PANEL FOR 1 CYLINDER

