

ALSIDIG, HØJ NØJAGTIG, SPRING, DOME OG AIR LOADED, DIAPHRAGM SENSOR

26-2300 Serien Backpressure Regulator

26-2300
26-2300 Serien

- Max Indgangstryk: 17.2 bar
- Design Proof Pressure: 150% maximum rated
- Leakage: Bubble-tight
- Temperaturområde: -40°C til 74°C
- CV: 0.60

TESCOM™



PRODUKTBESKRIVELSE

TESCOM 26-2300 Serien

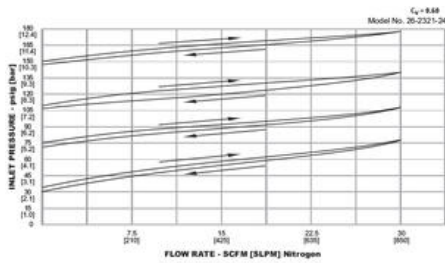
Høj nøjagtig, diaphragm sensor backpressure regulator. Som kan kontrollere tryk op til 34.5 bar og tilbyder mange CV værdier fra 0.02 op til 1.0. Tilgængelige som air og dome loaded versioner for bruge sammen med ER5000.

Applikationer

- Hydraulic or pneumatic testing
- Calibration
- Pump discharge pressure control

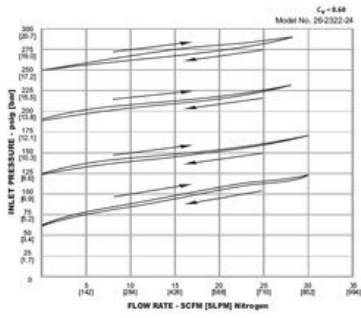
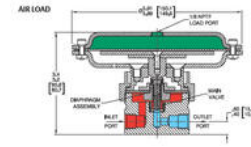
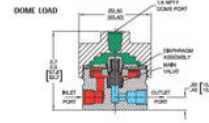
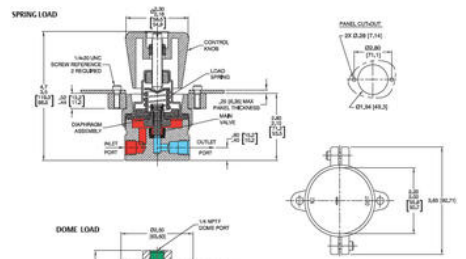
Fordele

- Crack to reseal - 2% af tryk
- Nem at justere, low torque handknob kontrol
- Bubble-tight shutoff ved alle reseal pressures
- Fire flow kapaciteter: Cv = 0.60 standard Cv = 0.06, 0.12, 1.0 optional
- Spring, dome, og air loaded modeller
- Panel montering som standard
- Kompatibel med ER5000



Example for selecting a part number:

26-23	2	1	2	4
BASIC SERIES	BODY MATERIAL	CONTROL PRESSURE RANGE	INLET AND OUTLET PORT TYPE	INLET AND OUTLET PORT SIZE
26-23	2 - 303 Stainless Steel 3 - 2024 T351 Aluminum 6 - 316 Stainless Steel	0 - 0.50 psig 0.3-4 bar 1 - 0.100 psig 0.10-1 bar 2 - 0.250 psig 0.17-2 bar	1 - SAE 2 - NPT 3 - MS31549	4 - 1/4" 6 - 3/8" 8 - 1/2"



Example for selecting a part number:

26-23	2	1	2	4
BASIC SERIES	BODY MATERIAL	CONTROL PRESSURE RANGE	INLET AND OUTLET PORT TYPE	INLET AND OUTLET PORT SIZE
26-23	2 - 303 Stainless Steel 3 - 2024 T351 Aluminum 6 - 316 Stainless Steel	0 - 0.50 psig 0.3-4 bar 1 - 0.100 psig 0.10-1 bar 2 - 0.250 psig 0.17-2 bar	1 - SAE 2 - NPT 3 - MS31549	4 - 1/4" 6 - 3/8" 8 - 1/2"

