

HØJT FLOW, HØJT TRYK, DOME LOADED, DIAPHRAGM SENSOR

26-1200 serien Trykreducerede Regulator

26-1261-1121
26-1261-1121

- Max indgangstryk: 414 Bar
- Max udgangstryk: 414 bar
- CV: 3.3, 6.0, 12.0, 20.0
- Temperaturområde: -40 til 93°C
- Bubble-tight

TESCOM™



PRODUKTBESKRIVELSE

TESCOM 26-1200 Series

Dome loaded, højt flow trykreducerende regulator er ekstern loaded med 414 bar maximum indgang og udgangstryk. 26-1200 Serien tilbyder 4 forskellige Cv værdier, balanceret ventil, og den er tilgængelig med ekstern sensor.

Applikationer

Rocket engine testing
Fueling
Facility supply
Natural gas pipeline

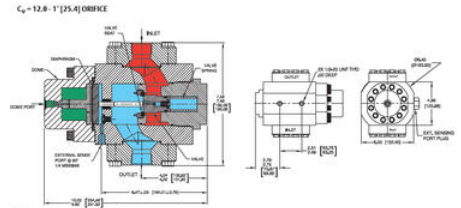
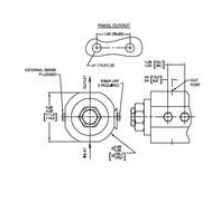
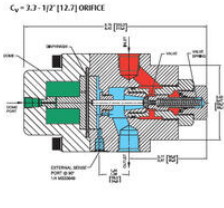
Fordele

- Diaphragm eller Piston sensor
- Nem at servicere
- Eksterne sensor tilgængelige (til højere nøjagtighed)
- Balanceret ventil (forlænger levetiden)
- Mulighed for både horitonsal og vertikal montering
- lavt "droop" og "lockup"

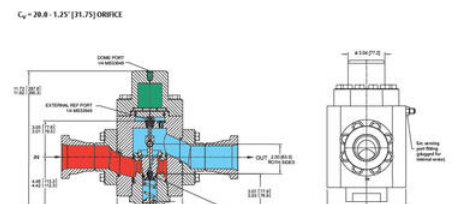
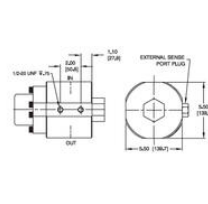
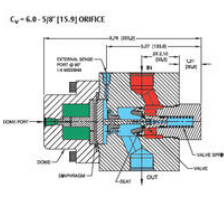
C _v = 12.0							MANDATORY FOR C _v = 12.0 MODEL	
26-12	6	1	2	1C	3	2	3	083
BASIC SERIES	BODY MATERIAL	LOADING METHOD	INLET AND OUTLET PORT TYPE	DOME PORT	INLET AND OUTLET PORT SIZE	SENSE TYPE	SENSE TYPE	MODEL NUMBER
26-12	6 - 316 Stainless Steel	1 - External	2 - SAE 3 - NPT 4 - MS33469	1/4" MS33469 1/4" NPT 1/4" MS33469	16 - 1" 28 - 1 1/4"	2 - Internal 4 - External	2	083

C _v = 20.0							MANDATORY FOR C _v = 20.0			
26-12	6	V.C	LA	2	2	164	2	164		
BASIC SERIES	BODY MATERIAL	O-RING	SEAL	TEMPERATURE	INLET & OUTLET PORT TYPE	PRESSURE RANGE	INLET & OUTLET MAX PRESSURE	END TO END DIMENSIONS (INCH) [MM]	SENSE TYPE	MOD. NUMBER
26-12	6 - 316 Stainless Steel	D.C. - Nitril Diaphr. Buna-N	PCFE PEEK PEEK	-20°F to 150°F -20°C to 74°C -20°F to 200°F -20°C to 93°C	LA - 2" Crayloc G20 LB - 2" Crayloc G14 LC - 2" 15008 BT LD - 2" 20008 BT LE - 2" 15008 BT LF - 2" 20008 BT	Low Low Low Low	3600 PSC [248 bar] 3600 PSC [248 bar] 3100 PSC [214 bar] 3600 PSC [248 bar] 3100 PSC [214 bar] 3600 PSC [248 bar]	14.25 [374.7] 14.25 [374.7] 17.88 [454.0] 19.88 [504.8] 17.25 [450.8] 19.25 [501.6]	Internal Internal External External	164
	D.V. - Nitril Buna-N		PCFE PEEK	-20°F to 150°F -20°C to 74°C -20°F to 200°F -20°C to 93°C						
	V.C. - FKM [Viton®-A]		PEEK	-20°F to 200°F -20°C to 93°C						
	V.P. - FKM [Viton®-A]		Diaphr. SP3	-20°F to 200°F -20°C to 93°C						
	V.V. - FKM [Viton®-A]									

Non-constant Engineering for pressures above 3600 PSC [248 bar]



All dimensions are reference & nominal Metric (millimeter) equivalents are in brackets



All dimensions are reference & nominal Metric (millimeter) equivalents are in brackets