

DOGA 321

321.1000.3B.09

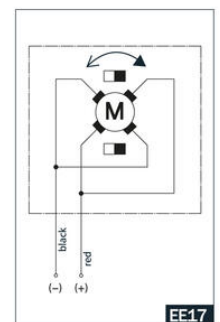
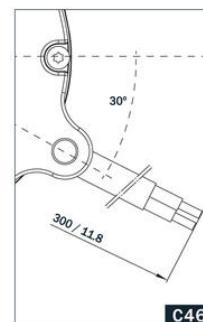
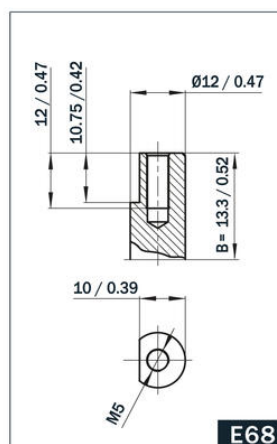
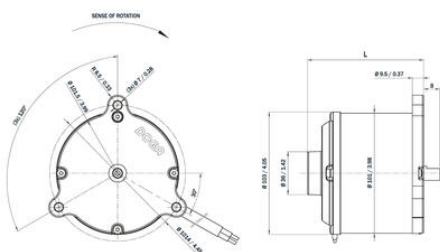
24VDC, 2700rpm, 1,9Nm, IP69K

DOGA

PRODUKTBESKRIVELSE

SPECIFIKATIONER

Forsyningsspænding	24 V DC
Nominal torque	1,9
Nominel hastighed	2700 omdr/min
Nominel strøm	27 A
IP-klasse	IP69K
Shaft Diameter	12 mm
Max moment	19
Torque characteristics	69
Strøm maks	250 A

**E68****C46****EE17**

