

GASFYLDT TERMOMETER ASEPTISKT UDFØRSEL

Serie 74

A74-45709110
Ø100 0-80°C Tri-clamp DN 1 1/2" poleret

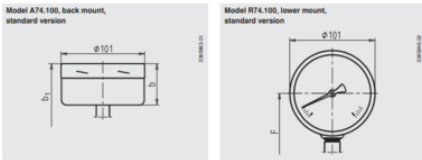
- Måleområde fra -20 op til 120 grader
- Procestilslutninger med clamp, gevind, VARIVENT, NEUMO Biocontrol etc.
- 3-A godkendt, mulighed for ATEX
- Option: Elektropoleret
- Option: Væskefyldt



PRODUKTBESKRIVELSE

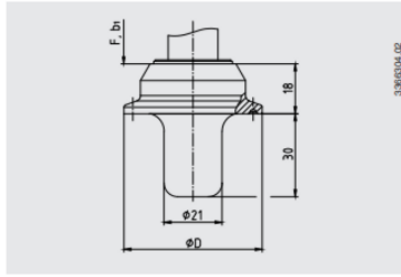
SPECIFIKATIONER

Configured measuring range ending value	80 °C
Configured measuring range starting value	0 °C
Diameter	100 mm
Godkendelser	3-A
Indstikslængde	30 mm
IP-klasse	IP65
Materiale glas	Lamineret sikkerhedsglas
Materiale hus	Rustfri stål 1.4301
Materiale medieberørte del	Rustfrit stål
Omgivelsestemperatur fra	-40 °C
Omgivelsestemperatur til	60 °C
Plug diameter	21 mm
Temperaturområde fra	-20 °C
Temperaturområde til	100 °C
Tilslutningsposition	Bagud
Trykmodstand max	25 bar

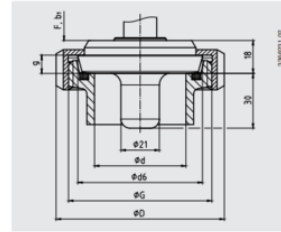


b = 50 mm
b = 60 mm
F = 82 mm

Type of process connection: Clamp connection



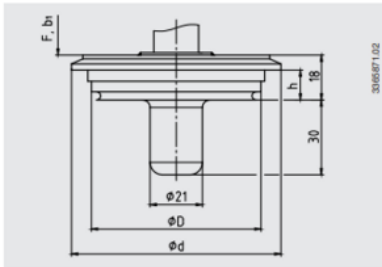
Type of process connection: Threaded connection per DIN 11851
Pipe standard: Pipes per DIN 11850 row 2



DN	For pipe Outer Ø x wall thickness	PN	Dimensions in mm				
			G	d	D	d _s	g
40	41 x 1.5	40	Rd 65 x 1/6	38	78	56	10
50	53 x 1.5	25	Rd 78 x 1/6	50	92	68.5	10
80	85 x 2	25	Rd 110 x 1/4	20	127	100	12

3-A conformity only in combination with profile sealing from SKS Komponenten BV or Kesselmann GmbH.

Type of process connection: VARIVENT®

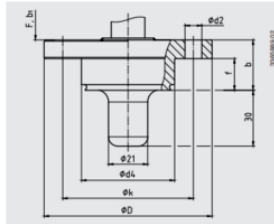


Access unit connection	PN ²⁾	Dimensions in mm		
		D	d	h
Form F	25	50	66	12.3
Form N	25	68	84	12.3

2) Pay attention to the pressure rating of the VARIVENT® access unit.

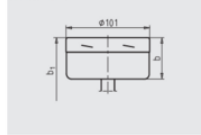
Note:
Suitable for installation into the VARIVENT® access unit from GEA Tuchenhagen.

Type of process connection: NEUMO BioControl®



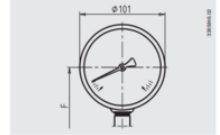
BioControl® connection	PN	Dimensions in mm					
		d ₂	d _s	D	f	b	k
Size 50	16	4 x Ø 9	50	90	17	27	70
Size 65	16	4 x Ø 11	68	120	17	27	95
Size 80	16	4 x Ø 11	87.5	140	25	37	115

Model A74.100, back mount, standard version

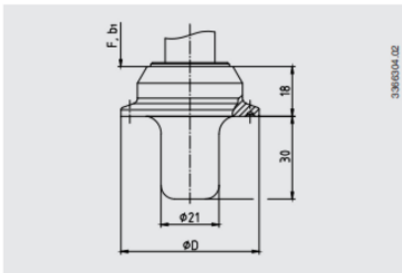


b = 50 mm
b = 60 mm
F = 82 mm

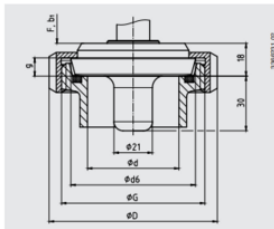
Model RT4.100, lower mount, standard version



Type of process connection: Clamp connection



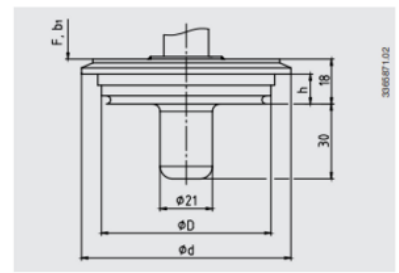
Type of process connection: Threaded connection per DIN 11851
Pipe standard: Pipes per DIN 11850 row 2



DN	For pipe Outer Ø x wall thickness	PN	Dimensions in mm				
			G	d	D	d _s	g
40	41 x 1.5	40	Rd 65 x 1/6	38	78	56	10
50	53 x 1.5	25	Rd 78 x 1/6	50	92	68.5	10
80	85 x 2	25	Rd 110 x 1/4	20	127	100	12

3-A conformity only in combination with profile sealing from SKS Komponenten BV or Kesselmann GmbH.

Type of process connection: VARIVENT®

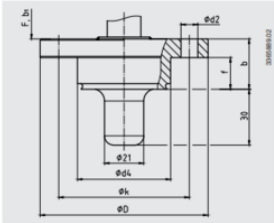


Access unit connection	PN ²⁾	Dimensions in mm		
		D	d	h
Form F	25	50	66	12.3
Form N	25	68	84	12.3

2) Pay attention to the pressure rating of the VARIVENT® access unit.

Note:
Suitable for installation into the VARIVENT® access unit from GEA Tuchenhagen.

Type of process connection: NEUMO BioControl®



BioControl® connection	PN	Dimensions in mm					
		e_1	e_2	D	f	b	h
Size 50	16	4 x Ø 9	50	90	17	27	70
Size 65	16	4 x Ø 11	66	120	17	27	95
Size 80	16	4 x Ø 11	87.5	140	25	37	115