



MULTIPOINTFØLER RTD MED "BÅND-DESIGN"

Serie TR95

TR95
Multipointgivare "band-design"

- Kundespecifikke versioner
- Mange forskellige procestilslutninger
- Med eller uden dyklomme
- Udskiftelig måleindsats
- Op til 10 målepunkter

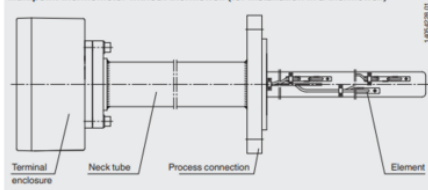


PRODUKTBESKRIVELSE

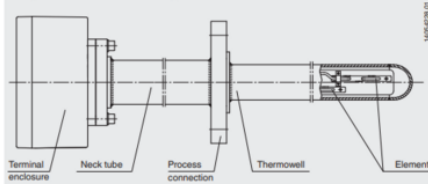
SPECIFIKATIONER

| | |
|-----------------------------------|---|
| Godkendelser | NAMUR, Ex-ia |
| Materiale | Rustfrit stål 316L, Rustfrit stål 316Ti |
| Materiale medieberørte del | Legering, Kulstofstål |

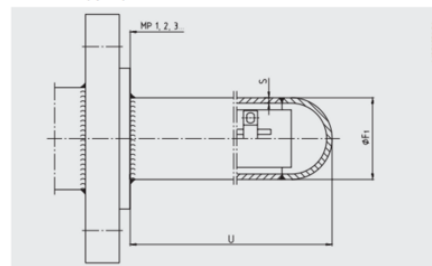
Multipoint thermometer without thermowell (for installation in a thermowell)



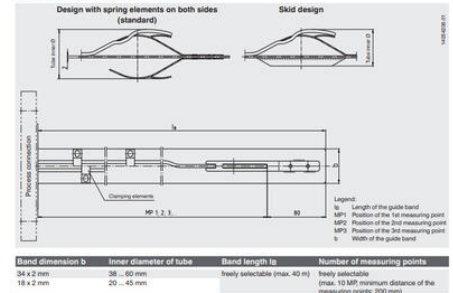
Multipoint thermometer with integrated thermowell



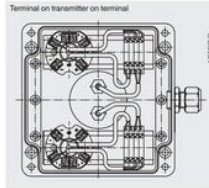
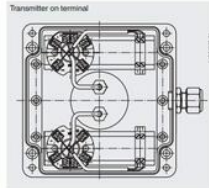
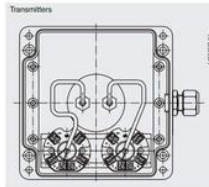
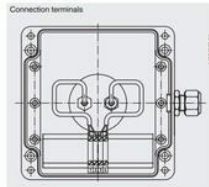
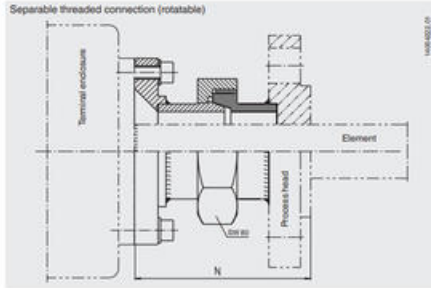
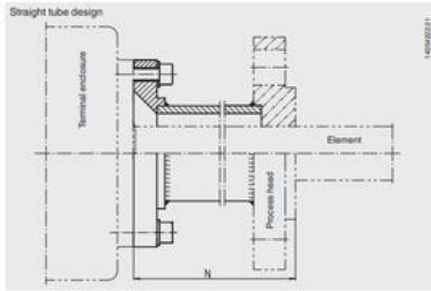
Thermowell (option)



Element (flat-steel band design with spring elements)



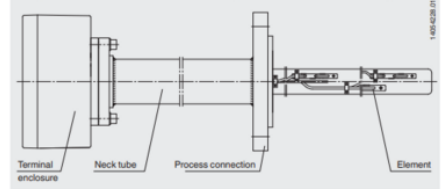
■ Neck tube



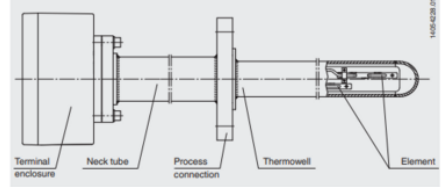
The actual wiring can deviate from the illustration in the data sheet.

| Connection options in the terminal enclosure | Terminal enclosure dimensions in mm | | |
|--|-------------------------------------|---------------|---------------|
| | ca. 160 x 160 | ca. 160 x 260 | ca. 250 x 400 |
| Connection terminals | up to 10 MP | up to 10 MP | up to 10 MP |
| Transmitters | up to 4 MP | up to 8 MP | up to 10 MP |
| Transmitter on terminal | up to 3 MP | up to 8 MP | up to 10 MP |
| Terminal on transmitter on terminal | up to 2 MP | up to 4 MP | up to 8 MP |

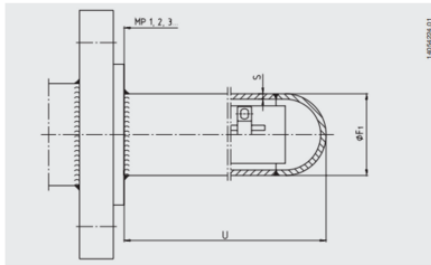
■ Multipoint thermometer without thermowell (for installation in a thermowell)



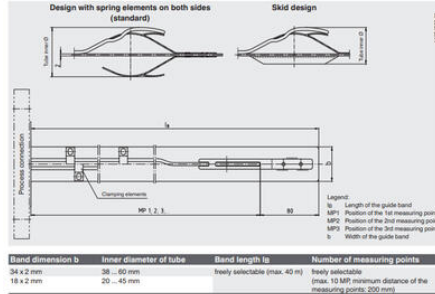
■ Multipoint thermometer with integrated thermowell



■ Thermowell (option)

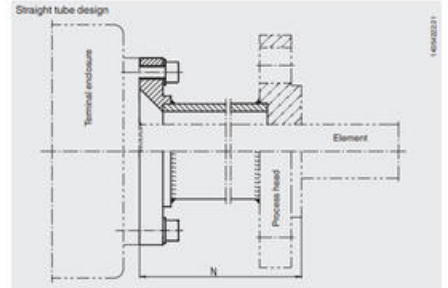


■ Element (flat steel band design with spring elements)

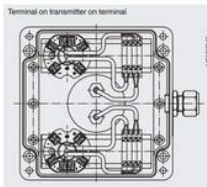
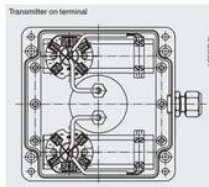
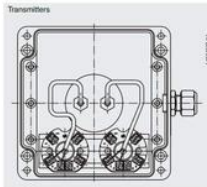
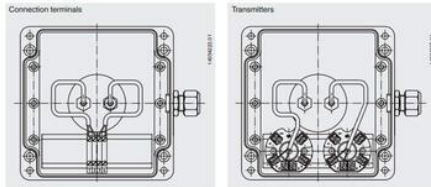
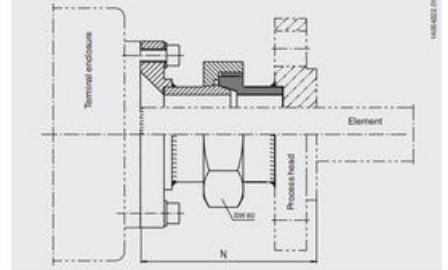


| Band dimension b | Inner diameter of tube b ₁ | Band length b ₂ | Number of measuring points n |
|------------------|---------------------------------------|-------------------------------|---|
| 34 x 2 mm | 38 – 60 mm | freely selectable (max. 40 m) | freely selectable |
| 18 x 2 mm | 20 – 45 mm | freely selectable (max. 40 m) | (max. 10 MP minimum distance of the measuring points: 200 mm) |

■ Neck tube



■ Separable threaded connection (rotatable)



The actual wiring can deviate from the illustration in the data sheet.

| Connection options in the terminal enclosure | Terminal enclosure dimensions in mm | | |
|--|-------------------------------------|---------------|---------------|
| | ca. 160 x 160 | ca. 160 x 260 | ca. 250 x 400 |
| Connection terminals | up to 10 MP | up to 10 MP | up to 10 MP |
| Transmitters | up to 4 MP | up to 8 MP | up to 10 MP |
| Transmitter on terminal | up to 3 MP | up to 8 MP | up to 10 MP |
| Terminal on transmitter on terminal | up to 2 MP | up to 4 MP | up to 8 MP |