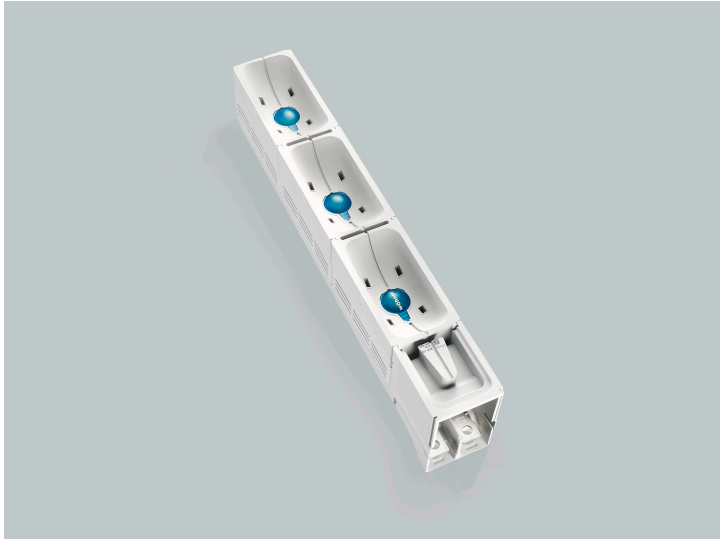


connection rail (01438)



The picture may show a similar product.

Description

Part No.: **01438**000A

CRITO[®] 185Power

connection rail

3-pole

screw M12

connection top or bottom

for busbars 30, 40, 60, 80, 100, 120 x 10

System

185Power

Product group 07

Subgroup 57

pack size 1

EAN 4021267014384

catalog page 2020 : 4.2

ECLASS 6.1 27141146
ECLASS 7.1 27141146
ETIM 4.0 EC000001
ETIM 5.0 EC000001

Approvals

Standards

IEC 61439-1:2020
IEC 60999-1:1999
IEC 60999-2:2003

type number: CRL185-800

CCC approval: no certification required

Technical data

Details IEC

Standards

IEC 61439-1:2020
IEC 60999-1:1999
IEC 60999-2:2003

Electrical data IEC

Rated current (IEC): 800 A
rated voltage (IEC) AC: 690 V

The insulation performance of the article depends on the installation conditions.

rated peak withstand current I_{pk} max.: 54.1 kA
rated short-time withstand current I_{CW} (0.5 s) max.: 25.9 kA

power dissipation of the article:

The power dissipation at a typical load of 80 % results to 172.8 W.
(The power dissipation at full load would be 270.0 W.)

Supplementary data IEC

The following values have been verified with tests under certain conditions. Please ask Wöhner for this conditions before designing your panel.

max. permitted voltage (IEC) AC: 1000 V
max. permitted voltage (IEC) DC: 1500 V
current capacity (IEC) max.: 800 A

Mechanical data

W x H x D: 100 x 665 x 150
weight: 484.0 kg/100
poles: 3-pole
for busbars: 30, 40, 60, 80, 100, 120 x 10

CT can be integrated in the device: ja
CT can be integrated in the CT module: ja

Terminal points

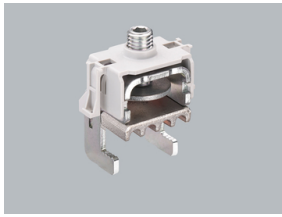
screw connection M12

Reference

For using more connection rails in parallel, a rated diversity factor according IEC 61439 should be taken into account.

For using accessorie 33736 Al is not allowed.

Accessories



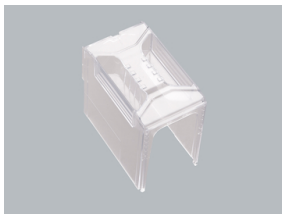
33738000A

CrossLink® terminal clamp
for busbar systems with CrossLink® touch-safe protection
size 1 - 3



33740000A

terminal clamp
for busbar systems without system covers
size 1 - 3



33733000A

terminal compartment cover
universal for NH-rails size 1 - 3 and connection rail 800 A
size 1-3



37212000A

current transformer 200 A / 5 A
2.5 VA / class 1
when used on busbars or in 630 A adapters, article 37900 is additionally required



37213000A

current transformer 250 A / 5 A
2.5 VA / class 1
when used on busbars or in 630 A adapters, article 37900 is additionally required



37214000A

current transformer 400 A / 5 A
2.5 VA / class 1
when used on busbars or in 630 A adapters, article 37900 is additionally required



37215000A

current transformer 500 A / 5 A

2.5 VA / class 1

when used on busbars or in 630 A adapters, article 37900 is additionally required



37216000A

current transformer 600 A / 5 A

2.5 VA / class 1

when used on busbars or in 630 A adapters, article 37900 is additionally required



37217000A

current transformer 800 A / 5 A

2.5 VA / class 1

when used on busbars or in 630 A adapters, article 37900 is additionally required



37219000A

current transformer 200 A / 5 A

1.5 VA / class 0.5

when used on busbars or in 630 A adapters, article 37900 is additionally required



37220000A

current transformer 250 A / 5 A

2.5 VA / class 0.5

when used on busbars or in 630 A adapters, article 37900 is additionally required



37221000A

current transformer 400 A / 5 A

2.5 VA / class 0.5

when used on busbars or in 630 A adapters, article 37900 is additionally required



37222000A

current transformer 500 A / 5 A

2.5 VA / class 0.5

when used on busbars or in 630 A adapters, article 37900 is additionally required



37223000A

current transformer 600 A / 5 A

2.5 VA / class 0.5

when used on busbars or in 630 A adapters, article 37900 is additionally required



37224000A

current transformer 800 A / 5 A

2.5 VA / class 0.5

when used on busbars or in 630 A adapters, article 37900 is additionally required

stock sale



37226000A

current transformer 250 A / 5 A

1.5 VA / class 0.5s

when used on busbars or in 630 A adapters, article 37900 is additionally required



37227000A

current transformer 400 A / 5 A

2.5 VA / class 0.5s

when used on busbars or in 630 A adapters, article 37900 is additionally required



37228000A

current transformer 500 A / 5 A

2.5 VA / class 0.5s

when used on busbars or in 630 A adapters, article 37900 is additionally required



37229000A

current transformer 600 A / 5 A

2.5 VA / class 0.5s

when used on busbars or in 630 A adapters, article 37900 is additionally required



37230000A

current transformer 800 A / 5 A

2.5 VA / class 0.5s

when used on busbars or in 630 A adapters, article 37900 is additionally required

stock sale



37232000A

current transformer 200 A / 5 A, with decl. of conformity

1.5 VA / class 0.5

when used on busbars or in 630 A adapters, article 37900 is additionally required



37233000A

current transformer 250 A / 5 A, with decl. of conformity

2.5 VA / class 0.5

when used on busbars or in 630 A adapters, article 37900 is additionally required



37234000A

current transformer 400 A / 5 A, with decl. of conformity

2.5 VA / class 0.5

when used on busbars or in 630 A adapters, article 37900 is additionally required



37235000A

current transformer 500 A / 5 A, with decl. of conformity

2.5 VA / class 0.5

when used on busbars or in 630 A adapters, article 37900 is additionally required



37236000A

current transformer 250 A / 5 A, with decl. of conformity

1.5 VA / class 0.5s

when used on busbars or in 630 A adapters, article 37900 is additionally required



37237000A

current transformer 400 A / 5 A, with decl. of conformity

2.5 VA / class 0.5s

when used on busbars or in 630 A adapters, article 37900 is additionally required



37238000A

current transformer 500 A / 5 A, with decl. of conformity

2.5 VA / class 0.5s

when used on busbars or in 630 A adapters, article 37900 is additionally required



37308000A

measuring transformer 800 A / 333 mV

class 0.5s

when used on busbars or in 630 A adapters, article 37900 is additionally required

NEW



37306000A

measuring transformer 500 A / 333 mV

class 0.5s

when used on busbars or in 630 A adapters, article 37900 is additionally required

NEW



37298000A

measuring transformer 400 A / 333 mV

class 0.5

when used on busbars or in 630 A adapters, article 37900 is additionally required

NEW



37289000A

measuring transformer 200 A / 333 mV

class 1

when used on busbars or in 630 A adapters, article 37900 is additionally required

NEW



37297000A

measuring transformer 250 A / 333 mV

class 0.5

when used on busbars or in 630 A adapters, article 37900 is additionally required

NEW



37301000A

measuring transformer 800 A / 333 mV

class 0.5

when used on busbars or in 630 A adapters, article 37900 is additionally required

NEW



37290000A

measuring transformer 250 A / 333 mV

class 1

when used on busbars or in 630 A adapters, article 37900 is additionally required

NEW



37296000A

measuring transformer 200 A / 333 mV

class 0.5

when used on busbars or in 630 A adapters, article 37900 is additionally required

NEW



37304000A

measuring transformer 250 A / 333 mV

class 0.5s

when used on busbars or in 630 A adapters, article 37900 is additionally required

NEW



37291000A

measuring transformer 400 A / 333 mV

class 1

when used on busbars or in 630 A adapters, article 37900 is additionally required

NEW



37303000A

measuring transformer 200 A / 333 mV

class 0.5s

when used on busbars or in 630 A adapters, article 37900 is additionally required

NEW



37294000A

measuring transformer 800 A / 333 mV

class 1

when used on busbars or in 630 A adapters, article 37900 is additionally required

NEW



37292000A

measuring transformer 500 A / 333 mV

class 1

when used on busbars or in 630 A adapters, article 37900 is additionally required

NEW



37293000A

measuring transformer 600 A / 333 mV

class 1

when used on busbars or in 630 A adapters, article 37900 is additionally required

NEW



37299000A

measuring transformer 500 A / 333 mV

class 0.5

when used on busbars or in 630 A adapters, article 37900 is additionally required

NEW



37305000A

measuring transformer 400 A / 333 mV

class 0.5s

when used on busbars or in 630 A adapters, article 37900 is additionally required

NEW



37300000A

measuring transformer 600 A / 333 mV

class 0.5

when used on busbars or in 630 A adapters, article 37900 is additionally required

NEW



37307000A

measuring transformer 600 A / 333 mV

class 0.5s

when used on busbars or in 630 A adapters, article 37900 is additionally required

NEW