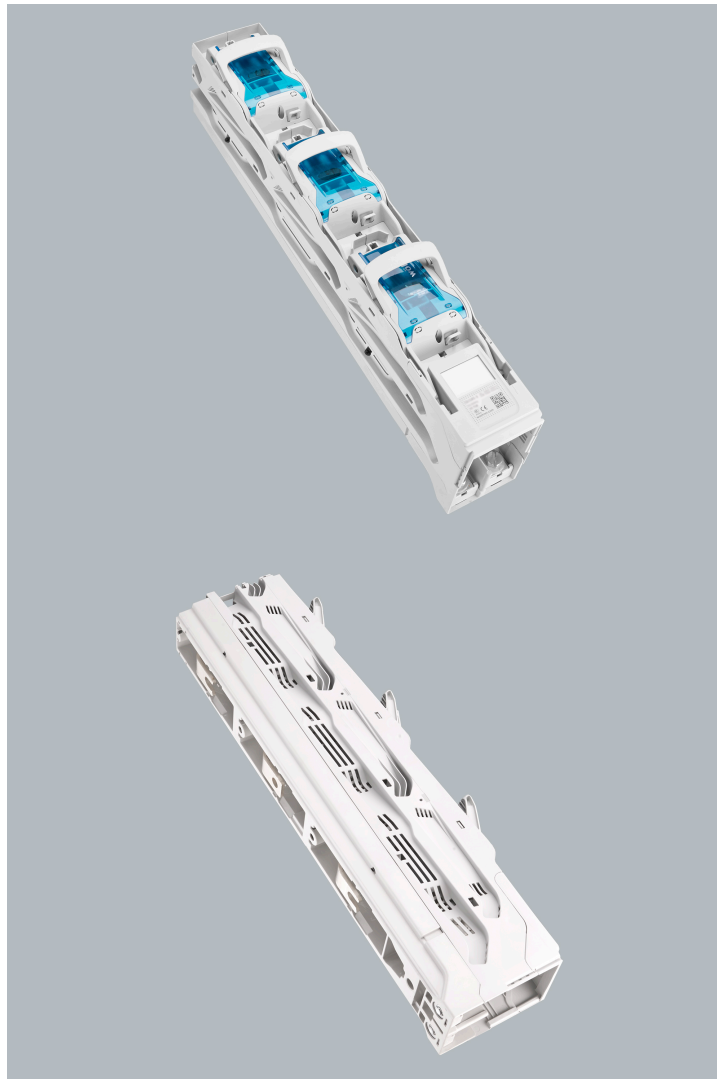


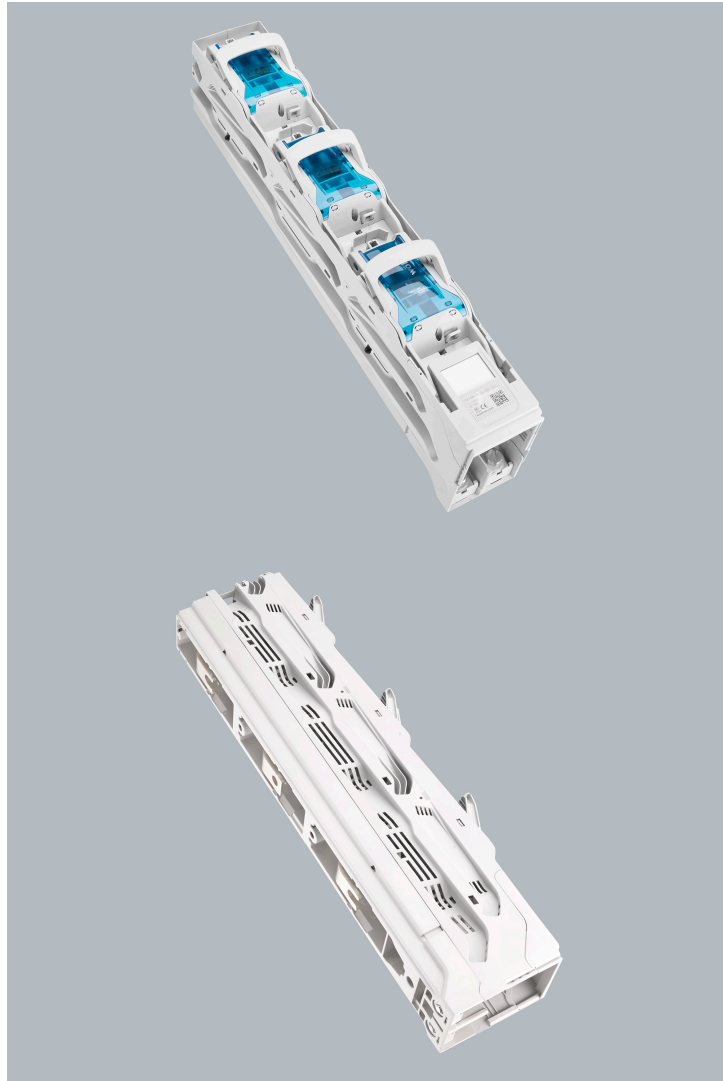
in-line fuse switch-disconnector 250 A (33716)



Value Added Services
System CrossBoard®
System 30Compact, 3-pole
System 30Compact, 5-pole
System 60Classic
System 185Power
Centre feed unit
Measurement technique
Panel, fuse holders
Panel, switching devices
Accessories



The picture may show a similar product.



Description

Part No.: **33716**000A
QUADRON[®] 185Power
in-line fuse switch-disconnector 250 A
size 1, 1-pole switchable
screw M12
for busbars 30, 40, 60, 80, 100, 120 x 10

System

185Power

Advantages of the product

Self-closing inspection holes are available in the cover.
Cover can be locked when closed.

Product group 12
Subgroup 43

pack size 1
EAN 4021267337162

catalog page 2020 : 4.11, 4.12

ECLASS 6.1 27142108
ECLASS 7.1 27142108
ETIM 4.0 EC001046
ETIM 5.0 EC001046

Approvals

Standards

IEC 60947-1:2020

IEC 60947-3:2020 AC ratings only

Approvals

IEC (CB), CCC



type number: QU185-1

CCC certificate: 2015010302769224

Technical data

for fuse links size:	NH 1
fuse links acc. to standard:	IEC / HD 60269-2
permitted power dissipation of the fuse-link:	23 W
requirements for contact parts:	Fuse links with silver-plated contact pieces recommended. For fuse links with nickel-plated contact pieces, a reduction factor of 0.8 is to be observed.

Details IEC

Standards

IEC 60947-1:2020

IEC 60947-3:2020 AC ratings only

Electrical data IEC

Rated current (IEC): 250 A

rated voltage (IEC) AC: 690 V

rated isolation voltage U_i AC: 1000 V

rated surge voltage U_{imp} : 8 kV

Utilisation category AC (IEC 60947-3): AC-23B 250A/400V
AC-22B 250A/690V
AC-21B 250A/690V

Utilisation category DC (IEC 60947-3): DC-20B
max. voltage between the fuses: 1000V
visible information required: Do not switch under load.

cond. short-circuit current with fuses (AC): 100 kA / 690 V
120 kA / 500 V

approved with fuse links of operation class: gG

power dissipation of the article:

The power dissipation at a typical load of 80 % results to 15.4 W.
(The power dissipation at full load would be 24.0 W.)

Supplementary data IEC

The following values have been verified with tests under certain conditions. Please ask Wöhner for this conditions before designing your panel.

A fuse-combination unit acc. to IEC 60947-3 can only be operated at a higher voltage than its rated voltage, if it is used as a fuse-disconnector without breaking capacity, up to its max. rated insulation voltage and labelled as such.

Degree of protection IP20 at front, degree of protection near terminal depends on installation

Mechanical data

W x H x D: 100 x 670 x 189
weight: 495.0 kg/100
poles: 3-pole
for busbars: 30, 40, 60, 80, 100, 120 x 10

CT can be integrated in the device: ja
CT can be integrated in the CT module: ja
front degree of protection: IP20
degree of protection when open: IP10

Type of fastening:
can be screwed onto drilled busbar, diameter 13mm, undrilled
mounting with terminal clamp
connection:
screw connection M12

Terminal points

screw M12 :
Md 30 Nm

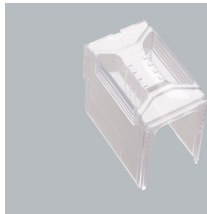
Reference

The terminal compartment cover 33733 is always needed for the connection at top and when using cable lugs.

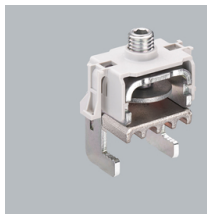
Accessories



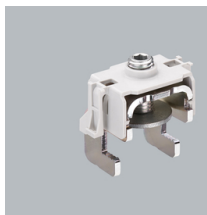
33735000A
box terminal
für Cu / Al 70 - 240 mm²
size 1 - 3



33733000A
terminal compartment cover
universal for NH-rails size 1 - 3 and connection rail
800 A
size 1- 3



33738000A
CrossLink® terminal clamp
for busbar systems with CrossLink® touch-safe
protection
size 1 - 3



33740000A
terminal clamp
for busbar systems without system covers
size 1 - 3



33156000
pilot switch
changeover 250 V AC / 5 A, 30 V DC / 4 A

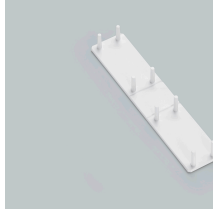


33758000A
lateral bearing strip
for front covers
size 00 - 3



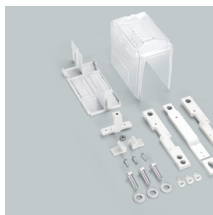
33736000A

box terminal
für Cu / Al 120 - 300 mm²
size 1-3



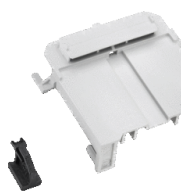
33761000A

rear touch-safe protection cover
rear protection for Phase L1



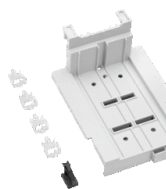
33762000A

universal current transformer module
for mounting in the connection compartment
size 1 - 3



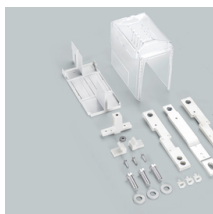
33768000A

plug support with mounting rail
for CT wiring
size 1 - 3



33769000A

component support with mounting rails
for fuse monitor and CT wiring
size 1 - 3



33776000A

universal current transformer module
for mounting in the connection compartment
size 1 - 3

NEW



37212000A

current transformer 200 A / 5 A
2.5 VA / class 1
when used on busbars or in 630 A adapters, article
37900 is additionally required



37213000A

current transformer 250 A / 5 A
2.5 VA / class 1

when used on busbars or in 630 A adapters, article 37900 is additionally required



37219000A

current transformer 200 A / 5 A
1.5 VA / class 0.5

when used on busbars or in 630 A adapters, article 37900 is additionally required



37220000A

current transformer 250 A / 5 A
2.5 VA / class 0.5

when used on busbars or in 630 A adapters, article 37900 is additionally required



37226000A

current transformer 250 A / 5 A
1.5 VA / class 0.5s

when used on busbars or in 630 A adapters, article 37900 is additionally required



37232000A

current transformer 200 A / 5 A, with decl. of conformity

1.5 VA / class 0.5

when used on busbars or in 630 A adapters, article 37900 is additionally required



37233000A

current transformer 250 A / 5 A, with decl. of conformity

2.5 VA / class 0.5

when used on busbars or in 630 A adapters, article 37900 is additionally required



37236000A

current transformer 250 A / 5 A, with decl. of conformity

1.5 VA / class 0.5s

when used on busbars or in 630 A adapters, article 37900 is additionally required



37289000A

measuring transformer 200 A / 333 mV class 1

when used on busbars or in 630 A adapters, article 37900 is additionally required

NEW



37290000A

measuring transformer 250 A / 333 mV class 1

when used on busbars or in 630 A adapters, article 37900 is additionally required

NEW



37296000A

measuring transformer 200 A / 333 mV class 0.5

when used on busbars or in 630 A adapters, article 37900 is additionally required

NEW



37297000A

measuring transformer 250 A / 333 mV class 0.5

when used on busbars or in 630 A adapters, article 37900 is additionally required

NEW



37303000A

measuring transformer 200 A / 333 mV class 0.5s

when used on busbars or in 630 A adapters, article 37900 is additionally required

NEW