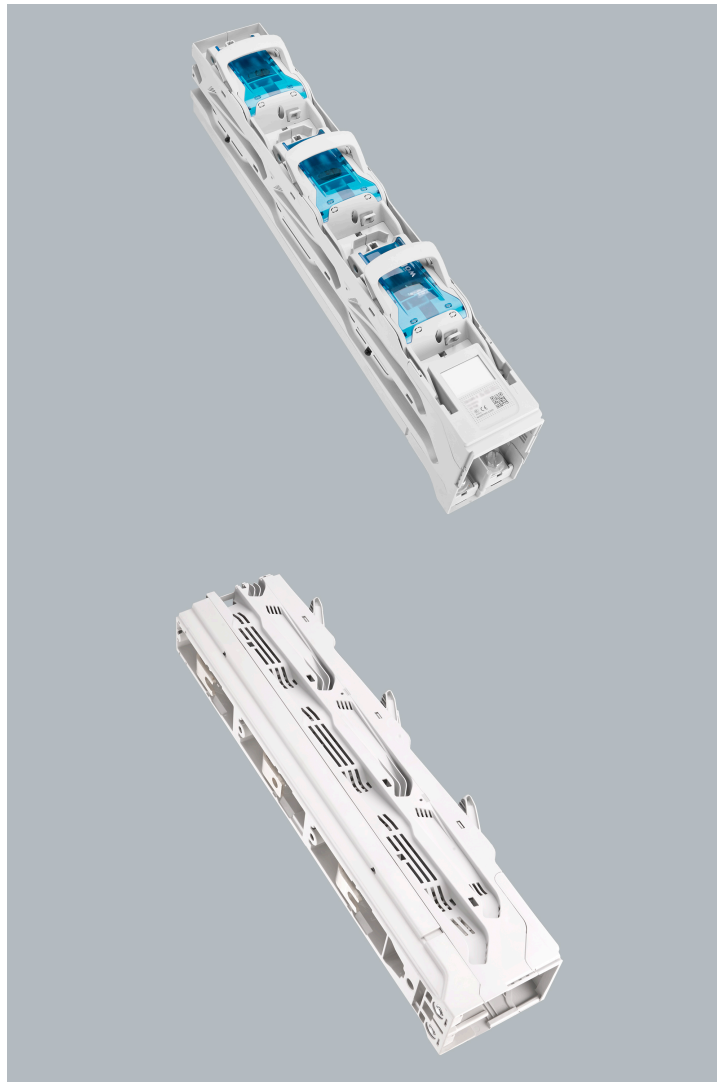


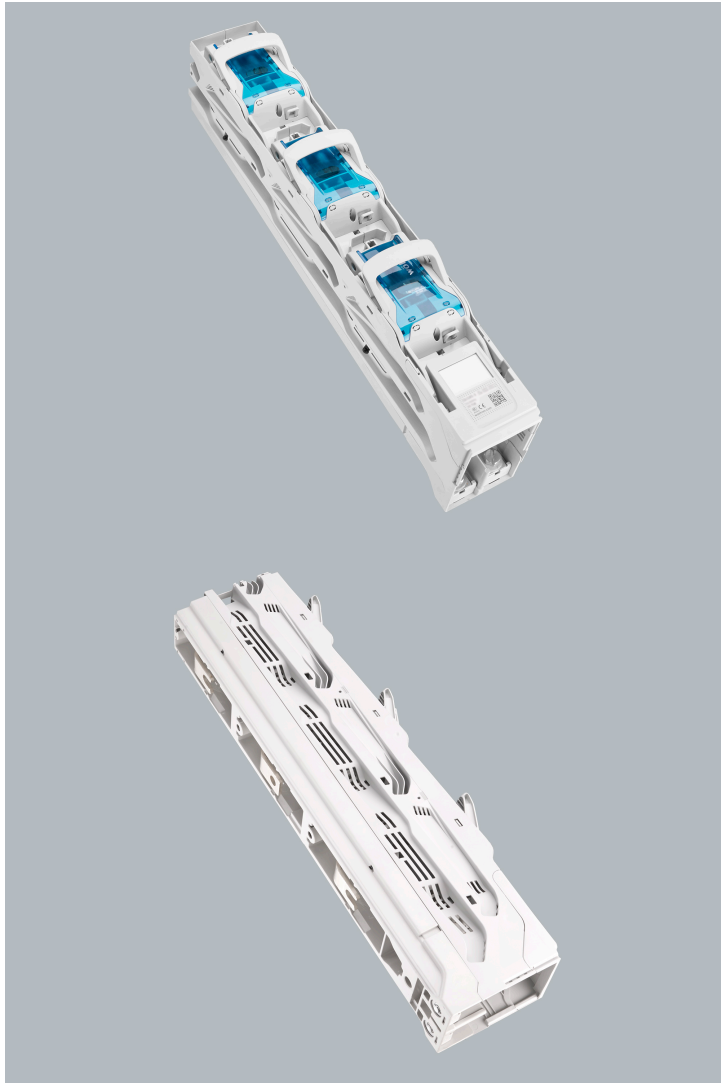
## in-line fuse switch-disconnector 630 A (33718)



- Value Added Services
- System CrossBoard®
- System 30Compact, 3-pole
- System 30Compact, 5-pole
- System 60Classic
- System 185Power
- Centre feed unit
- Measurement technique
- Panel, fuse holders
- Panel, switching devices
- Accessories



The picture may show a similar product.



## Description

Part No.: **33718**000A  
QUADRON<sup>®</sup> 185Power  
in-line fuse switch-disconnector 630 A  
size 3, 1-pole switchable  
screw M12  
for busbars 30, 40, 60, 80, 100, 120 x 10

### System

185Power

### Advantages of the product

Self-closing inspection holes are available in the cover.  
Cover can be locked when closed.

Product group 12  
Subgroup 45

pack size 1  
EAN 4021267337186

catalog page 2020 : 4.11, 4.12

ECLASS 6.1 27142108  
ECLASS 7.1 27142108  
ETIM 4.0 EC001046  
ETIM 5.0 EC001046

## Approvals

### Standards

IEC 60947-1:2020

IEC 60947-3:2020 AC ratings only

### Approvals

IEC (CB), CCC



type number: QU185-3

CCC certificate: 2015010302773479

## Technical data

for fuse links size:	NH 3
fuse links acc. to standard:	IEC / HD 60269-2
permitted power dissipation of the fuse-link:	48 W
requirements for contact parts:	Fuse links with silver-plated contact pieces recommended. For fuse links with nickel-plated contact pieces, a reduction factor of 0.8 is to be observed.

### Details IEC

#### Standards

IEC 60947-1:2020

IEC 60947-3:2020 AC ratings only

#### Electrical data IEC

Rated current (IEC): 630 A

rated voltage (IEC) AC: 690 V

rated isolation voltage  $U_i$  AC: 1000 V

rated surge voltage  $U_{imp}$ : 8 kV

Utilisation category AC (IEC 60947-3): AC-23B 630A/400V  
AC-22B 630A/500V  
AC-21B 500A/690V

Utilisation category DC (IEC 60947-3): DC-20B  
max. voltage between the fuses: 1000V  
visible information required: Do not switch under load.

cond. short-circuit current with fuses (AC): 100 kA / 500 V  
80 kA / 690 V

approved with fuse links of operation class: gG

power dissipation of the article:

The power dissipation at a typical load of 80 % results to 75.5 W.  
(The power dissipation at full load would be 118.0 W.)

### Supplementary data IEC

The following values have been verified with tests under certain conditions. Please ask Wöhner for this conditions before designing your panel.

A fuse-combination unit acc. to IEC 60947-3 can only be operated at a higher voltage than its rated voltage, if it is used as a fuse-disconnector without breaking capacity, up to its max. rated insulation voltage and labelled as such.

Degree of protection IP20 at front, degree of protection near terminal depends on installation

### Mechanical data

W x H x D: 100 x 670 x 189  
weight: 574.0 kg/100  
poles: 3-pole  
for busbars: 30, 40, 60, 80, 100, 120 x 10

CT can be integrated in the device: ja  
CT can be integrated in the CT module: ja  
front degree of protection: IP20  
degree of protection when open: IP10

Type of fastening:  
can be screwed onto drilled busbar, diameter 13mm, undrilled  
mounting with terminal clamp  
connection:  
screw connection M12

### Terminal points

screw M12 :  
Md 30 Nm

### Reference

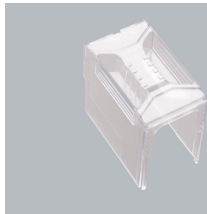
The terminal compartment cover 33733 is always needed for the connection at top and when using cable lugs.

## Accessories



### **33736000A**

box terminal  
für Cu / Al 120 - 300 mm<sup>2</sup>  
size 1-3



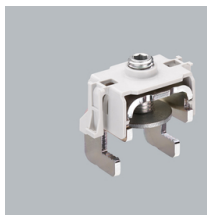
### **33733000A**

terminal compartment cover  
universal for NH-rails size 1 - 3 and connection rail  
800 A  
size 1- 3



### **33738000A**

CrossLink® terminal clamp  
for busbar systems with CrossLink® touch-safe  
protection  
size 1 - 3



### **33740000A**

terminal clamp  
for busbar systems without system covers  
size 1 - 3



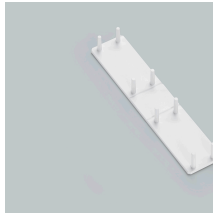
### **33156000**

pilot switch  
changeover 250 V AC / 5 A, 30 V DC / 4 A



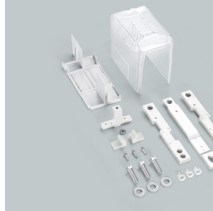
### **33758000A**

lateral bearing strip  
for front covers  
size 00 - 3



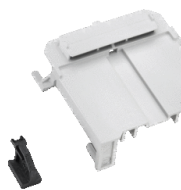
### **33761000A**

rear touch-safe protection cover  
rear protection for Phase L1



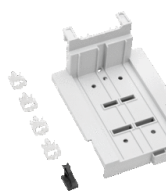
### **33762000A**

universal current transformer module  
for mounting in the connection compartment  
size 1 - 3



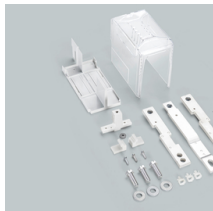
### **33768000A**

plug support with mounting rail  
for CT wiring  
size 1 - 3



### **33769000A**

component support with mounting rails  
for fuse monitor and CT wiring  
size 1 - 3



### **33776000A**

universal current transformer module  
for mounting in the connection compartment  
size 1 - 3

NEW



### **37212000A**

current transformer 200 A / 5 A  
2.5 VA / class 1  
when used on busbars or in 630 A adapters, article  
37900 is additionally required



### **37213000A**

current transformer 250 A / 5 A  
2.5 VA / class 1  
when used on busbars or in 630 A adapters, article

37900 is additionally required



### **37214000A**

current transformer 400 A / 5 A  
2.5 VA / class 1

when used on busbars or in 630 A adapters, article  
37900 is additionally required



### **37215000A**

current transformer 500 A / 5 A  
2.5 VA / class 1

when used on busbars or in 630 A adapters, article  
37900 is additionally required



### **37216000A**

current transformer 600 A / 5 A  
2.5 VA / class 1

when used on busbars or in 630 A adapters, article  
37900 is additionally required



### **37219000A**

current transformer 200 A / 5 A  
1.5 VA / class 0.5

when used on busbars or in 630 A adapters, article  
37900 is additionally required



### **37220000A**

current transformer 250 A / 5 A  
2.5 VA / class 0.5

when used on busbars or in 630 A adapters, article  
37900 is additionally required



### **37221000A**

current transformer 400 A / 5 A  
2.5 VA / class 0.5

when used on busbars or in 630 A adapters, article  
37900 is additionally required



### **3722000A**

current transformer 500 A / 5 A  
2.5 VA / class 0.5

when used on busbars or in 630 A adapters, article 37900 is additionally required



### **37223000A**

current transformer 600 A / 5 A  
2.5 VA / class 0.5

when used on busbars or in 630 A adapters, article 37900 is additionally required



### **37226000A**

current transformer 250 A / 5 A  
1.5 VA / class 0.5s

when used on busbars or in 630 A adapters, article 37900 is additionally required



### **37227000A**

current transformer 400 A / 5 A  
2.5 VA / class 0.5s

when used on busbars or in 630 A adapters, article 37900 is additionally required



### **37228000A**

current transformer 500 A / 5 A  
2.5 VA / class 0.5s

when used on busbars or in 630 A adapters, article 37900 is additionally required



### **37229000A**

current transformer 600 A / 5 A  
2.5 VA / class 0.5s

when used on busbars or in 630 A adapters, article 37900 is additionally required



### **37232000A**

current transformer 200 A / 5 A, with decl. of conformity

1.5 VA / class 0.5

when used on busbars or in 630 A adapters, article 37900 is additionally required



### **37233000A**

current transformer 250 A / 5 A, with decl. of conformity

2.5 VA / class 0.5

when used on busbars or in 630 A adapters, article 37900 is additionally required



### **37234000A**

current transformer 400 A / 5 A, with decl. of conformity

2.5 VA / class 0.5

when used on busbars or in 630 A adapters, article 37900 is additionally required



### **37235000A**

current transformer 500 A / 5 A, with decl. of conformity

2.5 VA / class 0.5

when used on busbars or in 630 A adapters, article 37900 is additionally required



### **37236000A**

current transformer 250 A / 5 A, with decl. of conformity

1.5 VA / class 0.5s

when used on busbars or in 630 A adapters, article 37900 is additionally required



### **37237000A**

current transformer 400 A / 5 A, with decl. of conformity

2.5 VA / class 0.5s

when used on busbars or in 630 A adapters, article

37900 is additionally required



### **37238000A**

current transformer 500 A / 5 A, with decl. of conformity

2.5 VA / class 0.5s

when used on busbars or in 630 A adapters, article 37900 is additionally required



### **37307000A**

measuring transformer 600 A / 333 mV  
class 0.5s

when used on busbars or in 630 A adapters, article 37900 is additionally required

**NEW**



### **37296000A**

measuring transformer 200 A / 333 mV  
class 0.5

when used on busbars or in 630 A adapters, article 37900 is additionally required

**NEW**



### **37304000A**

measuring transformer 250 A / 333 mV  
class 0.5s

when used on busbars or in 630 A adapters, article 37900 is additionally required

**NEW**



### **37289000A**

measuring transformer 200 A / 333 mV  
class 1

when used on busbars or in 630 A adapters, article 37900 is additionally required

**NEW**



### **37298000A**

measuring transformer 400 A / 333 mV  
class 0.5

when used on busbars or in 630 A adapters, article  
37900 is additionally required

**NEW**



### **37305000A**

measuring transformer 400 A / 333 mV  
class 0.5s

when used on busbars or in 630 A adapters, article  
37900 is additionally required

**NEW**



### **37293000A**

measuring transformer 600 A / 333 mV  
class 1

when used on busbars or in 630 A adapters, article  
37900 is additionally required

**NEW**



### **37290000A**

measuring transformer 250 A / 333 mV  
class 1

when used on busbars or in 630 A adapters, article  
37900 is additionally required

**NEW**



### **37303000A**

measuring transformer 200 A / 333 mV  
class 0.5s

when used on busbars or in 630 A adapters, article  
37900 is additionally required

**NEW**



### **37292000A**

measuring transformer 500 A / 333 mV  
class 1

when used on busbars or in 630 A adapters, article  
37900 is additionally required

NEW



### **37306000A**

measuring transformer 500 A / 333 mV  
class 0.5s

when used on busbars or in 630 A adapters, article  
37900 is additionally required

NEW



### **37297000A**

measuring transformer 250 A / 333 mV  
class 0.5

when used on busbars or in 630 A adapters, article  
37900 is additionally required

NEW



### **37291000A**

measuring transformer 400 A / 333 mV  
class 1

when used on busbars or in 630 A adapters, article  
37900 is additionally required

NEW



### **37299000A**

measuring transformer 500 A / 333 mV  
class 0.5

when used on busbars or in 630 A adapters, article  
37900 is additionally required

NEW



### **37300000A**

measuring transformer 600 A / 333 mV  
class 0.5

when used on busbars or in 630 A adapters, article  
37900 is additionally required

NEW