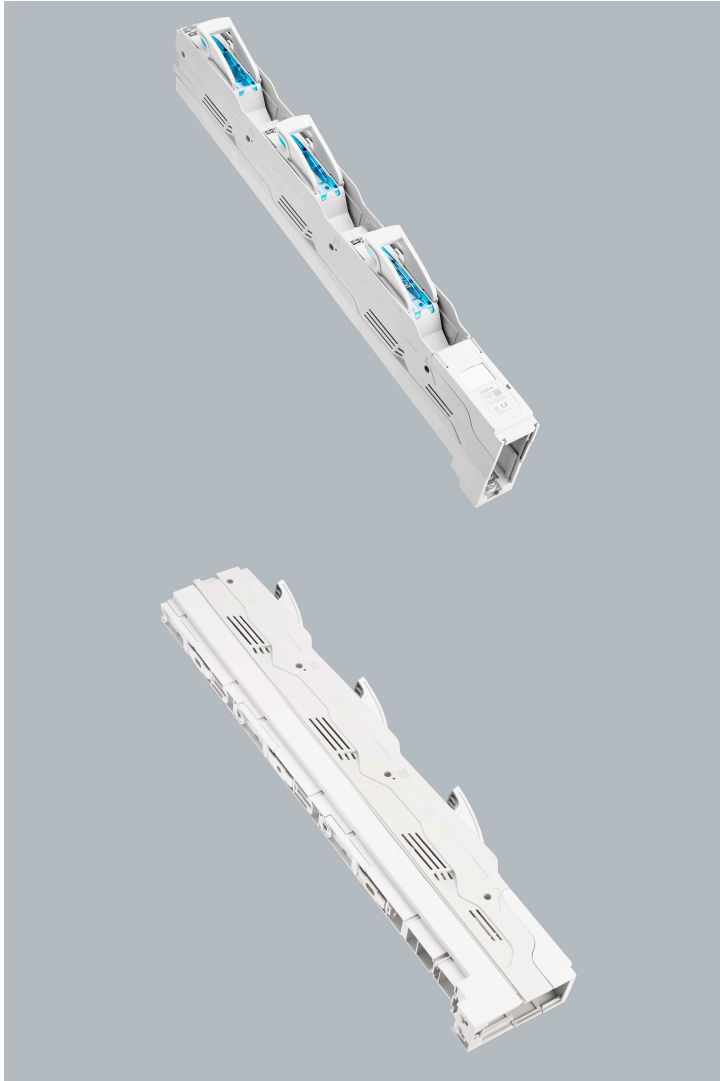
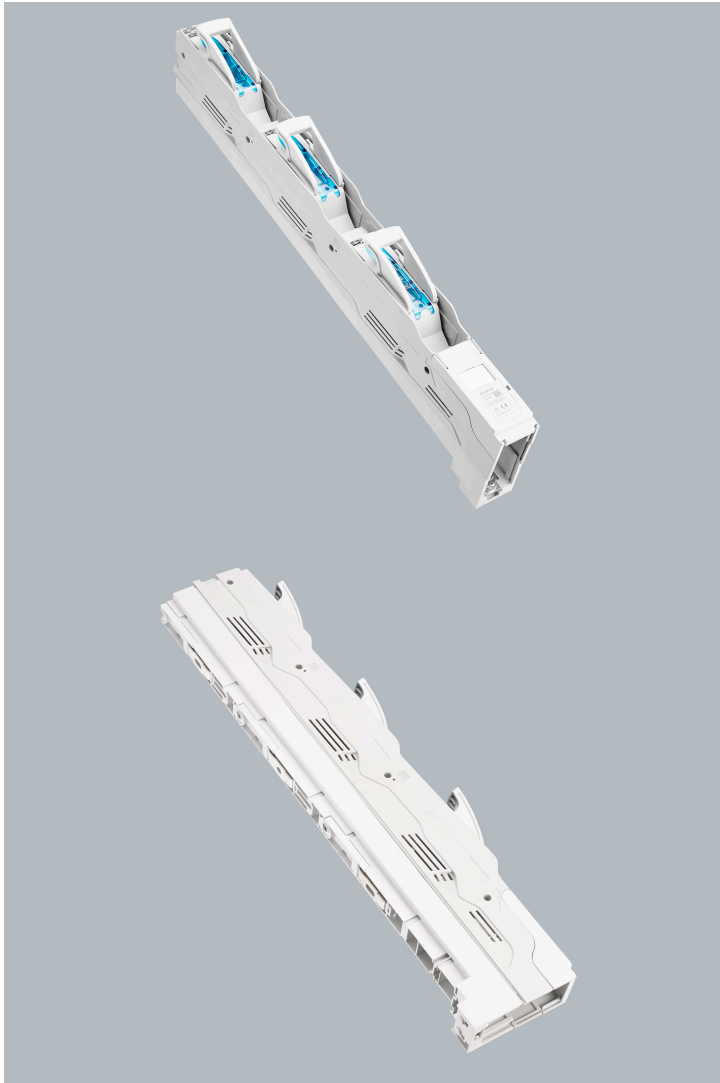


in-line fuse switch-disconnector 160 A (33719)



The picture may show a similar product.



Description

Part No.: **33719**000A

QUADRON[®] 185Power

in-line fuse switch-disconnector 160 A

Size 00, 1-pole switchable

flat version with screw M8

for busbars 30, 40, 60, 80, 100, 120 x 10

System

185Power

Advantages of the product

Self-closing inspection holes are available in the cover.

Cover can be locked when closed.

Product group 12
Subgroup 42

pack size 1
EAN 4021267337193

catalog page 2020 : 4.10, 4.9

ECLASS 6.1 27142108
ECLASS 7.1 27142108
ETIM 4.0 EC001046
ETIM 5.0 EC001046

Approvals

Standards

IEC 60947-1:2020
IEC 60947-3:2020 AC ratings only

Approvals

IEC (CB), CCC



type number: QU185-00

Technical data

for fuse links size:	NH 000, NH 00
fuse links acc. to standard:	IEC / HD 60269-2
permitted power dissipation of the fuse-link:	12 W
requirements for contact parts:	Fuse links with silver-plated contact pieces recommended. For fuse links with nickel-plated contact pieces, a reduction factor of 0.8 is to be observed.

Details IEC

Standards

IEC 60947-1:2020
IEC 60947-3:2020 AC ratings only

Electrical data IEC

Rated current (IEC): 160 A
rated voltage (IEC) AC: 690 V

rated isolation voltage U_i AC: 1000 V
rated surge voltage U_{imp} : 8 kV

Utilisation category AC (IEC 60947-3): AC-23B 160A/400V
AC-22B 160A/500V

Utilisation category DC (IEC 60947-3): DC-20B
max. voltage between the fuses: 1000V
visible information required: Do not switch under load.

cond. short-circuit current with fuses (AC): 100 kA / 690 V
approved with fuse links of operation class: gG

power dissipation of the article:
The power dissipation at a typical load of 80 % results to 14.7 W.
(The power dissipation at full load would be 23.0 W.)

Supplementary data IEC

The following values have been verified with tests under certain conditions. Please ask Wöhner for this conditions before designing your panel.

A fuse-combination unit acc. to IEC 60947-3 can only be operated at a higher voltage than its rated voltage, if it is used as a fuse-disconnector without breaking capacity, up to its max. rated insulation voltage and labelled as such.

Degree of protection IP20 at front, degree of protection near terminal depends on installation

Mechanical data

W x H x D: 50 x 670 x 147
weight: 211.4 kg/100
for busbars: 30, 40, 60, 80, 100, 120 x 10

front degree of protection: IP20

Type of fastening:

can be screwed onto drilled busbar, undrilled mounting with terminal clamp

connection:

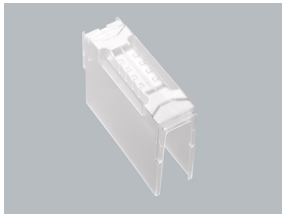
screw connection M8

Terminal points

screw M8 :

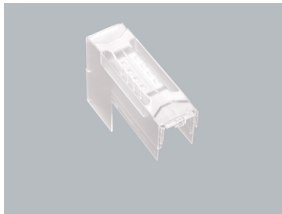
Md 12 - 14 Nm

Accessories



33725000A

terminal compartment cover, flat version, connection bottom
für 33704, 33705, 33719, 33724, 33773, 33774, 33775
size 00



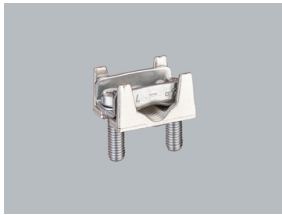
33727000A

terminal compartment cover, flat version, connection top
für 33704, 33705, 33719, 33724, 33773, 33774, 33775
size 00



33728000A

double adapter
for 2 devices size NH 00
for busbars: 30, 40, 60, 80, 100, 120 x 10



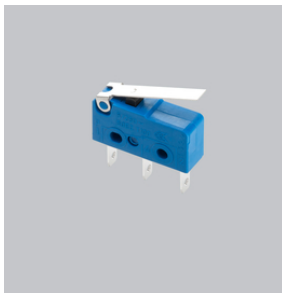
33734000A

wedge clamp terminal
für Cu / Al 10 - 95 mm²
size 00



33739000A

terminal clamp
for busbar systems without system covers
size 00



33156000

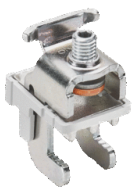
pilot switch
changeover 250 V AC / 5 A, 30 V DC / 4 A



33113000
lateral cover support
for front covers
size 00 - 3



33758000A
lateral bearing strip
for front covers
size 00 - 3



33765000A
CrossLink® terminal clamp IP20
for busbar systems with touch-safe protection
size 00



33766000A
plug support with mounting rail
for CT wiring
size 00



33767000A
component support with mount. rails
for fuse monitoring and CT wiring
size 00
phase-out product